



Kem C. Gardner

**POLICY INSTITUTE**

THE UNIVERSITY OF UTAH

# Six-County Projections

INFORMED DECISIONS™

---

Kem C. Gardner Policy Institute | 411 East South Temple Street, Salt Lake City, Utah 84111 | 801-585-5618 | [gardner.utah.edu](http://gardner.utah.edu)

AN INITIATIVE OF THE DAVID ECCLES SCHOOL OF BUSINESS

# Labor Market Indicators

*February 2017*

## **Unemployment rate**

Utah	3.1%
U.S.	4.7%

Utah unemployment: 47,500

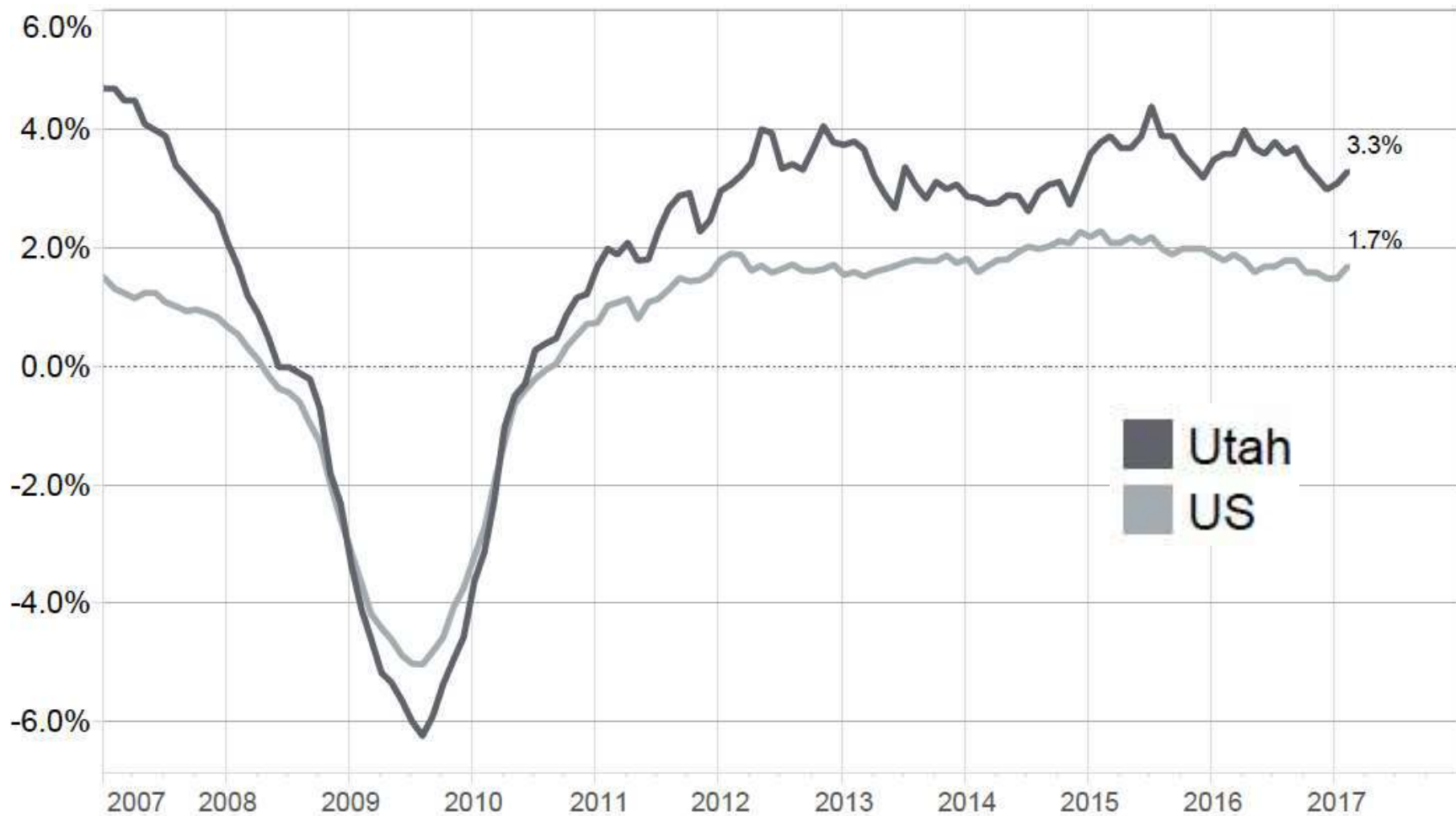
## **Job Growth Rate (year-over)**

Utah	3.3%
U.S.	1.7%

Utah job growth: 45,700

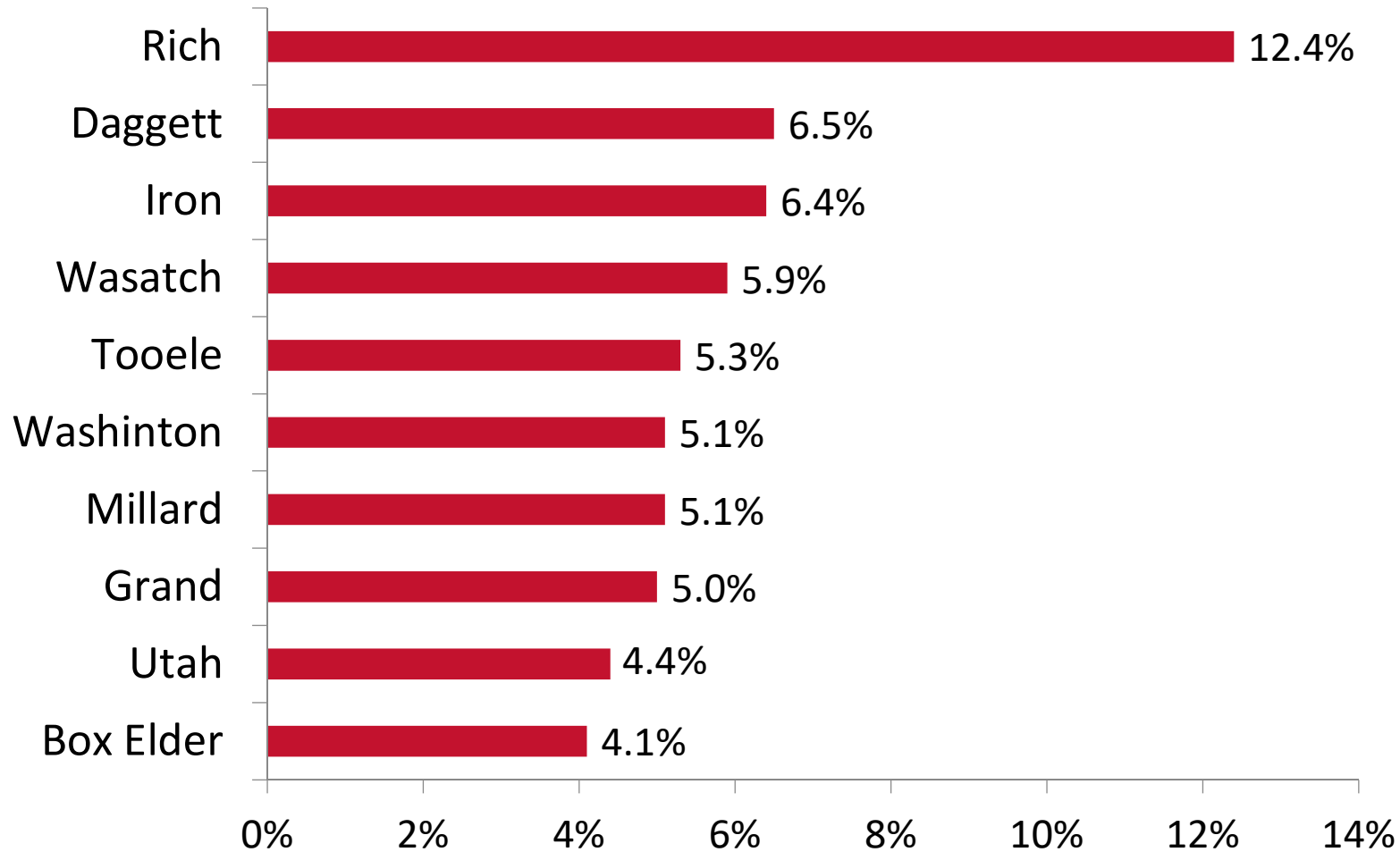
Source: Utah Department of Workforce Services

# U.S. and Utah Job Growth



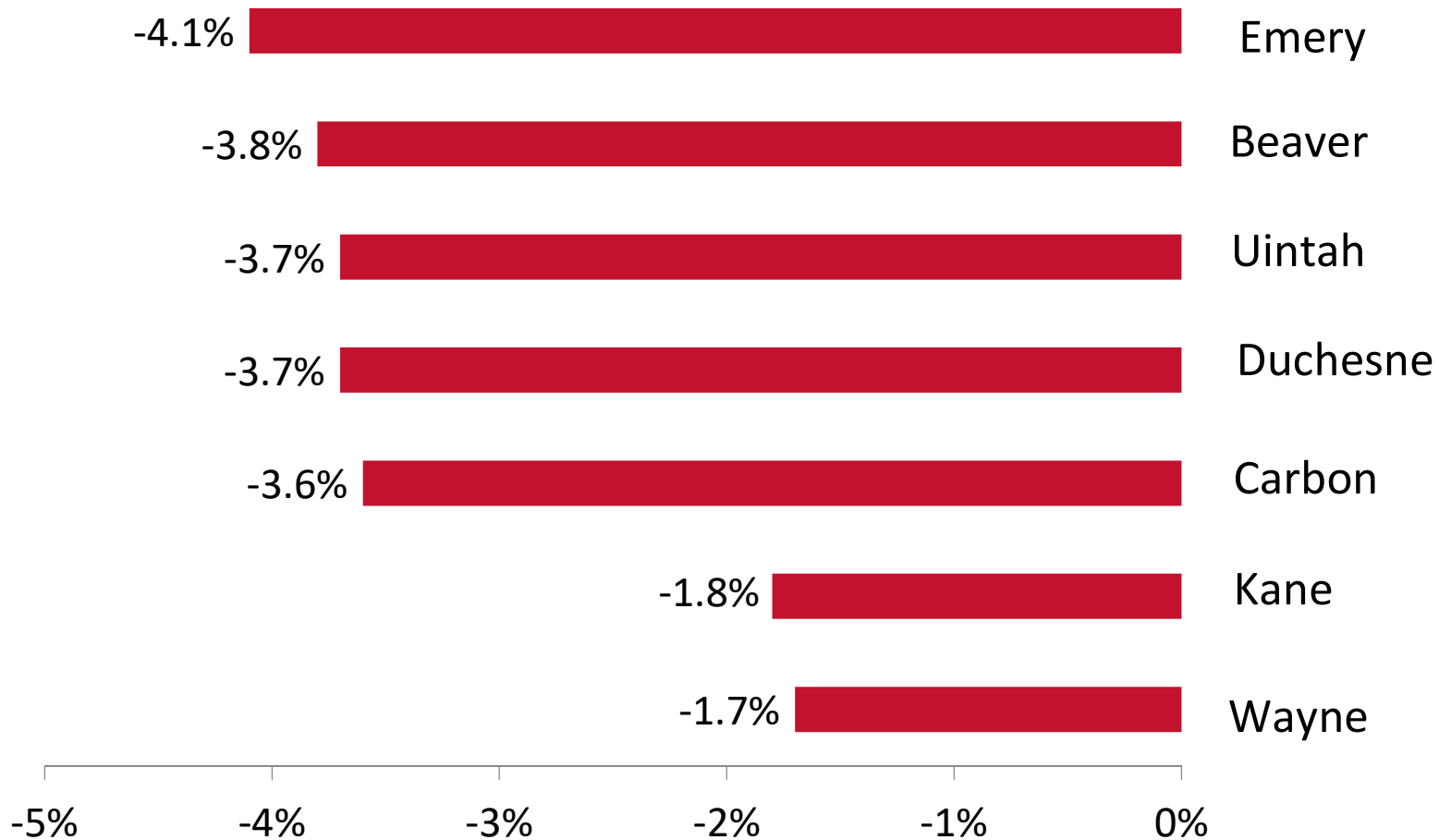
# Ten Fastest Growing Economies in Utah

*February 2016-2017*

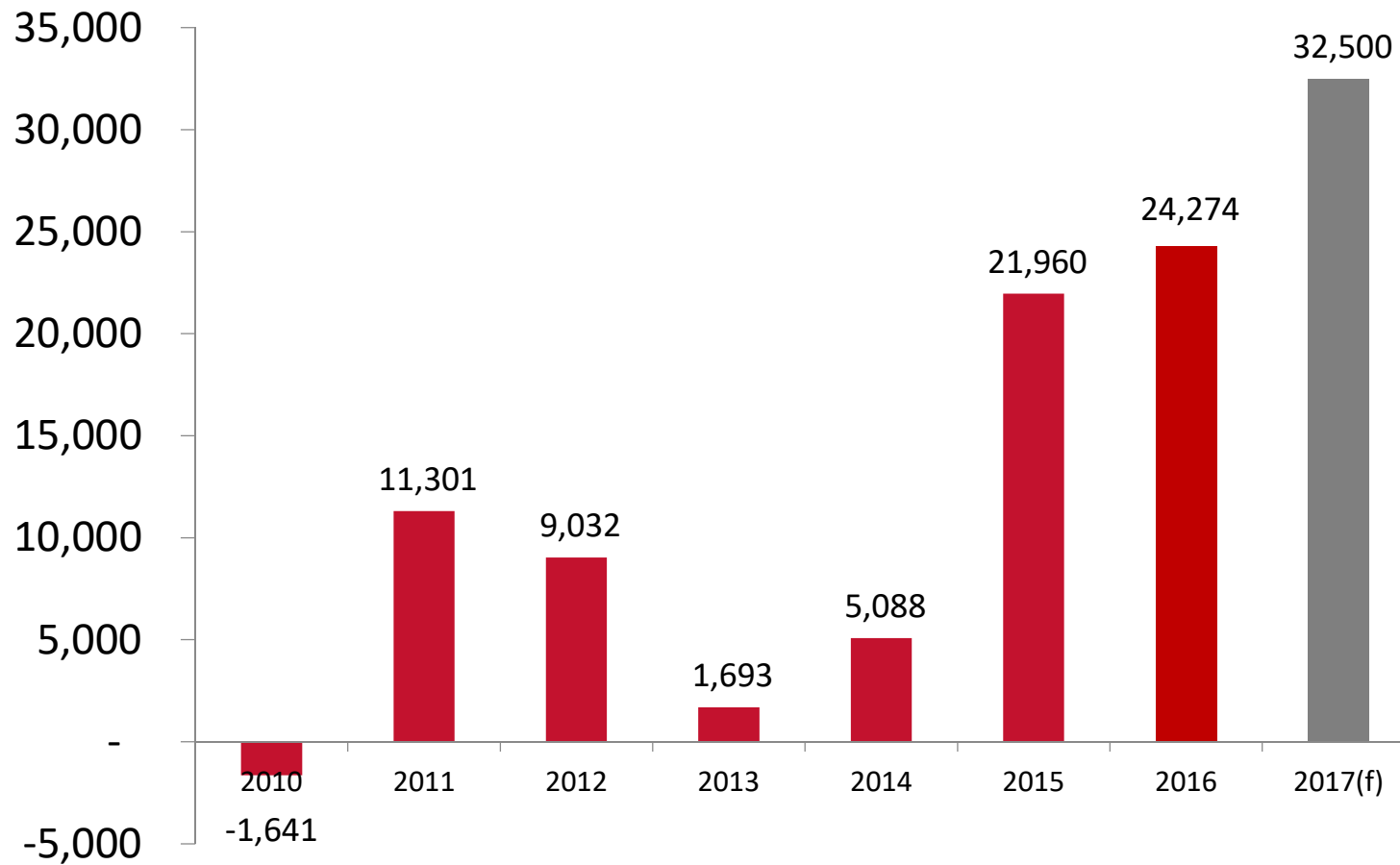


# Utah's Contracting Economies

February 2016-2017

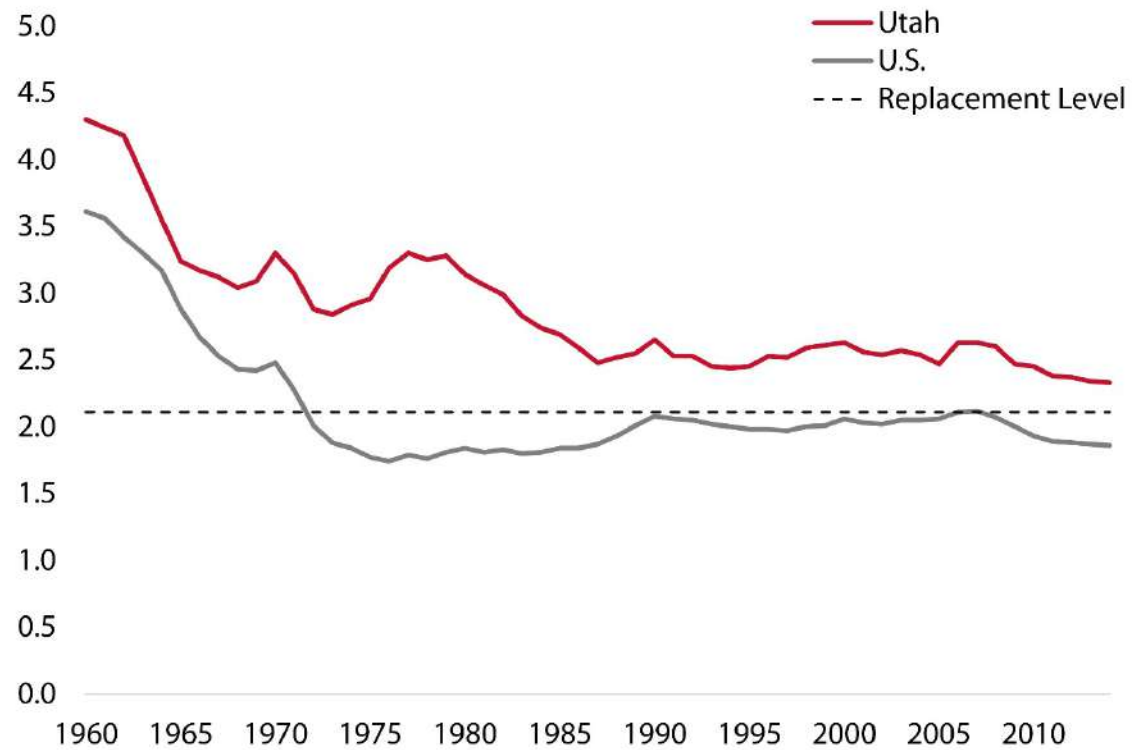


# Utah Net Migration



## Utah's fertility rate is at a historic low

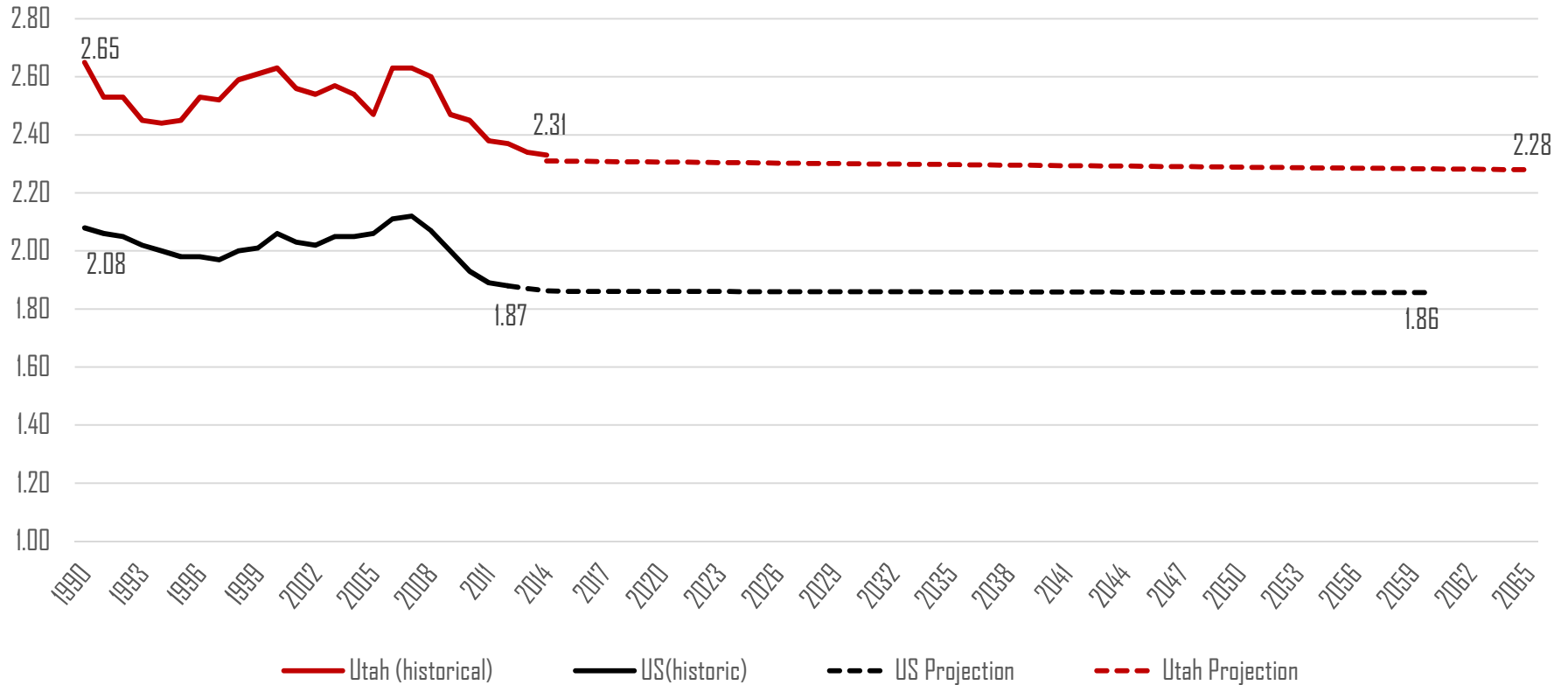
Total fertility rates for Utah and the United States



**Note:** The replacement level is the total fertility rate at which the current population is replaced.

**Source:** National Center for Health Statistics

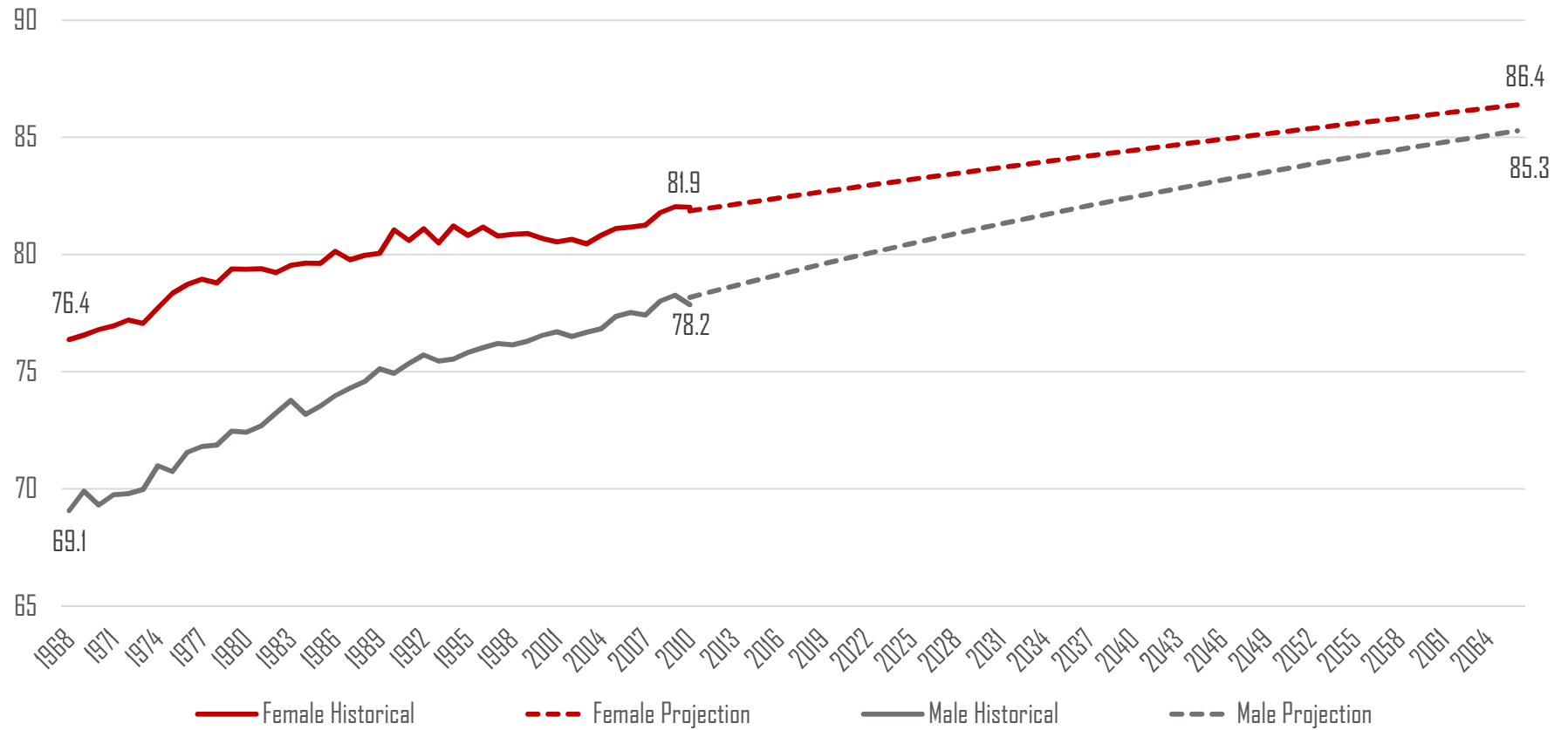
# Historical & Projected Total Fertility Rates: Utah vs United States



Sources: Census Bureau 2014-2060 National Projections; Kem C. Gardner Policy Institute 2015-2065 State Projections; Utah Department of Health

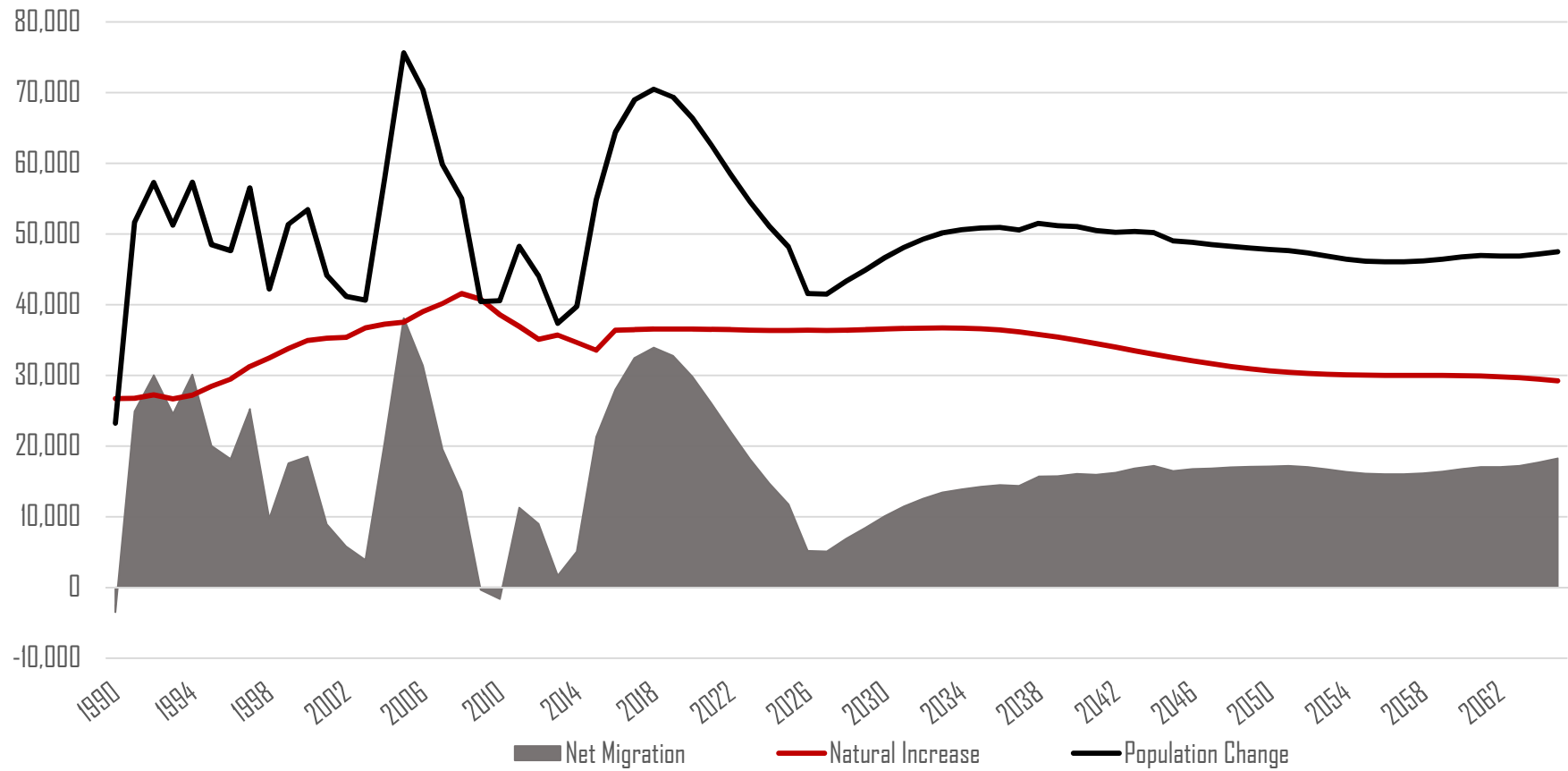


# Historical & Projected Utah Life Expectancy: Males and Females



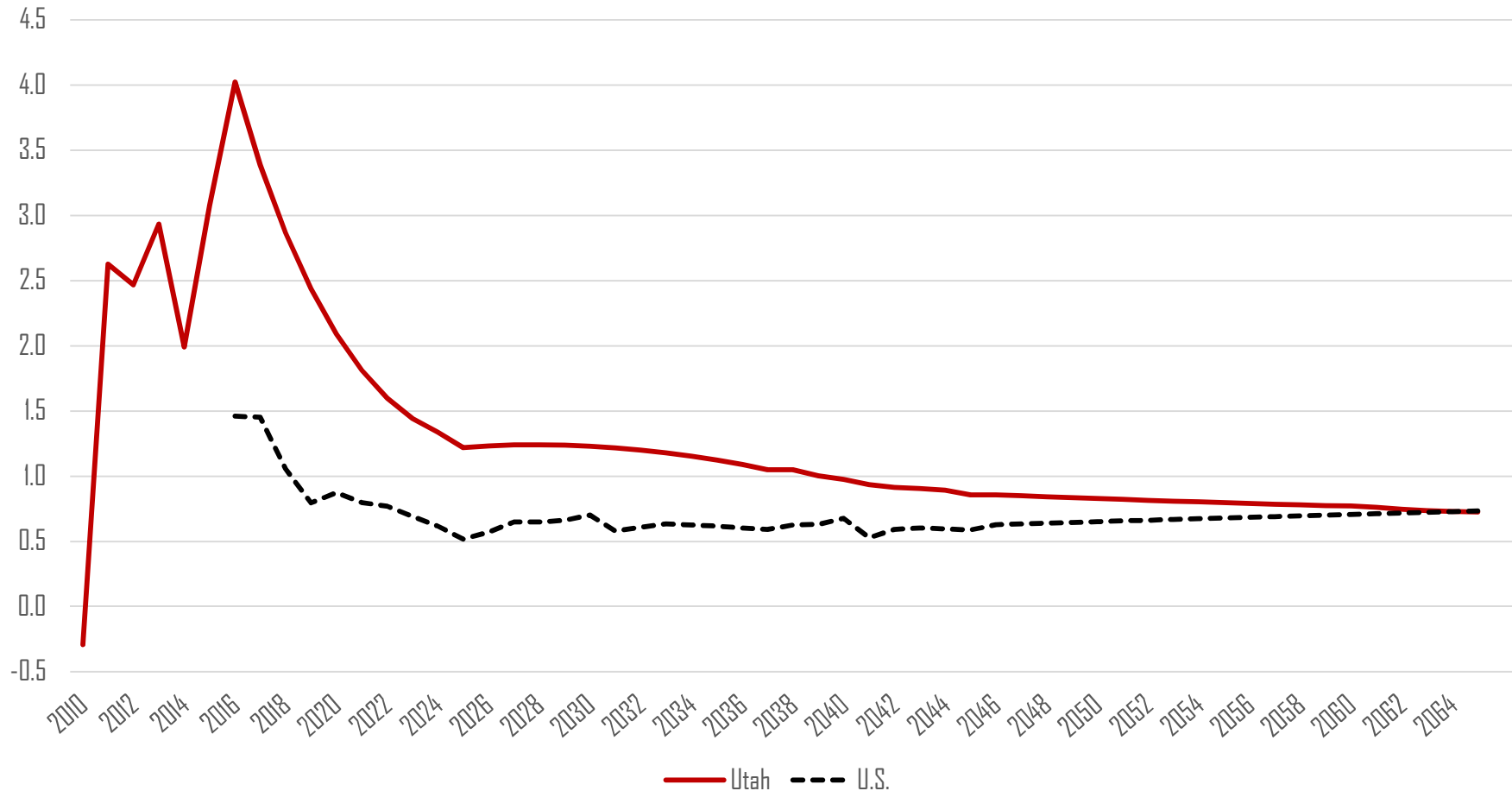
Sources: Kem C. Gardner Policy Institute 2015-2065 State Projections; Utah Department of Health

# State of Utah Components of Change: Historical and Projected



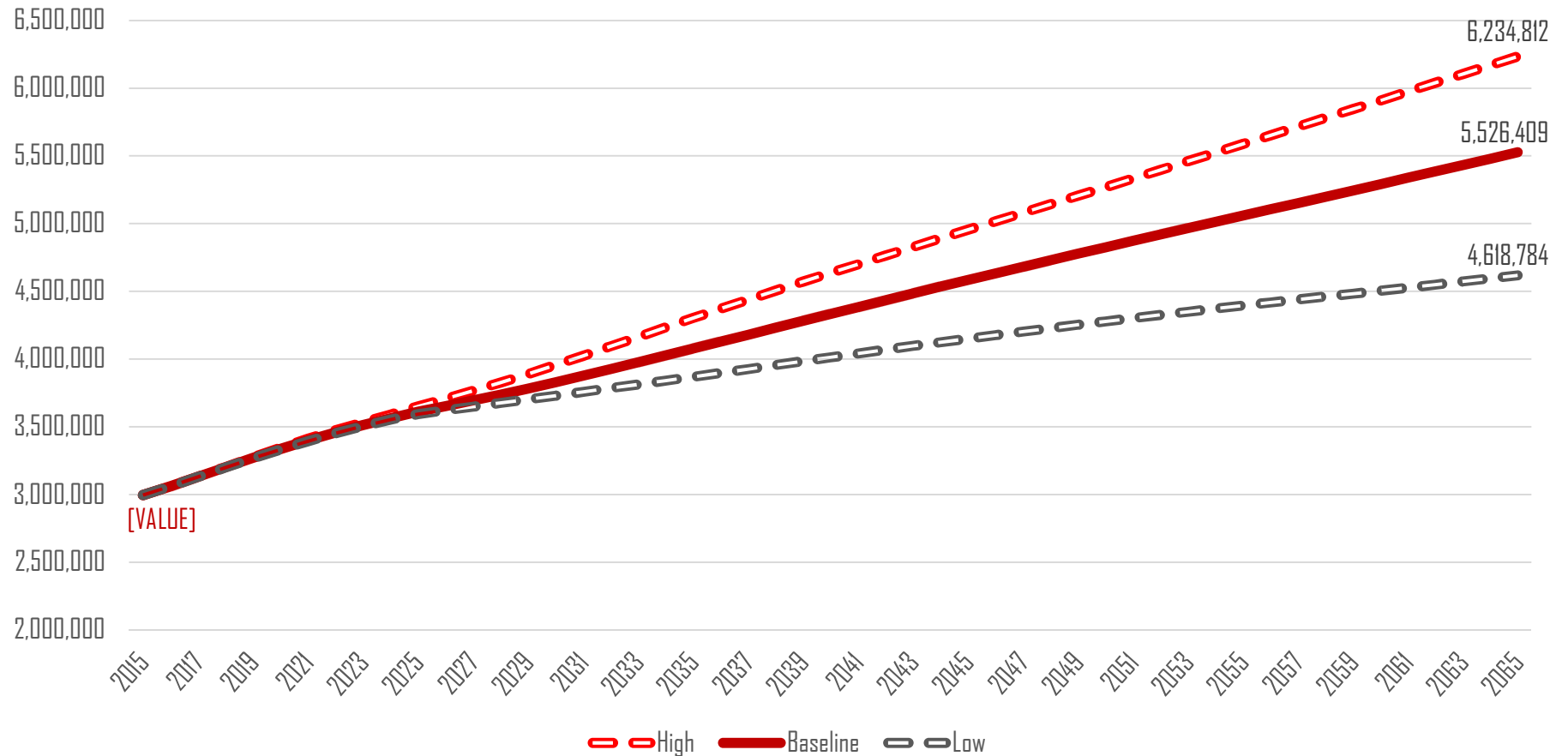
Sources: Kem C. Gardner Policy Institute 2015-2065 State Projections; UPEC Population Estimates 1990-2009; DUPC Population Estimates 2010-2015

# Historical and Projected Total Employment Growth (%): Utah & U.S.



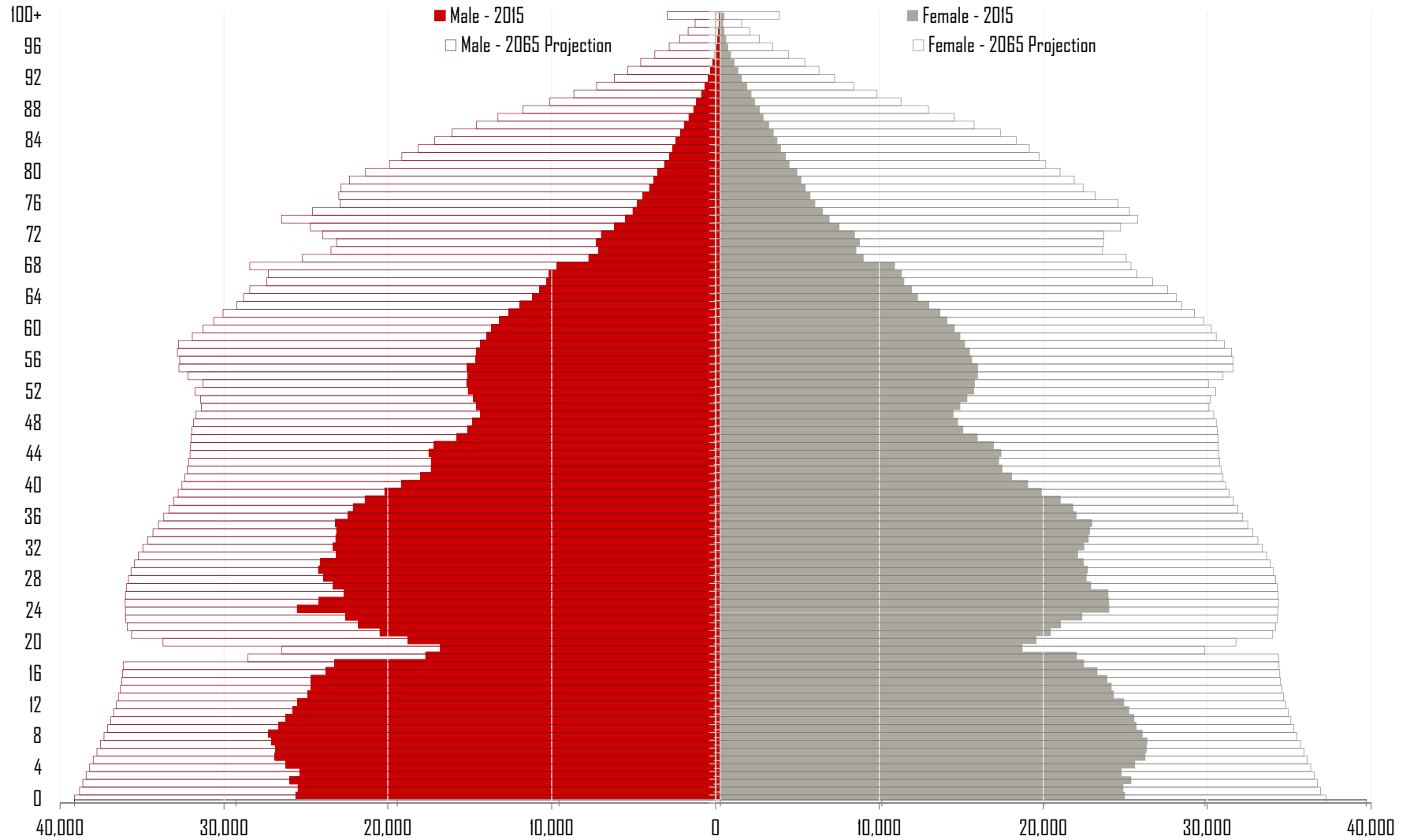
Source: Kem C. Gardner Policy Institute 2015-2065 State Projections

# Total Population: Low, Baseline, and High Scenarios



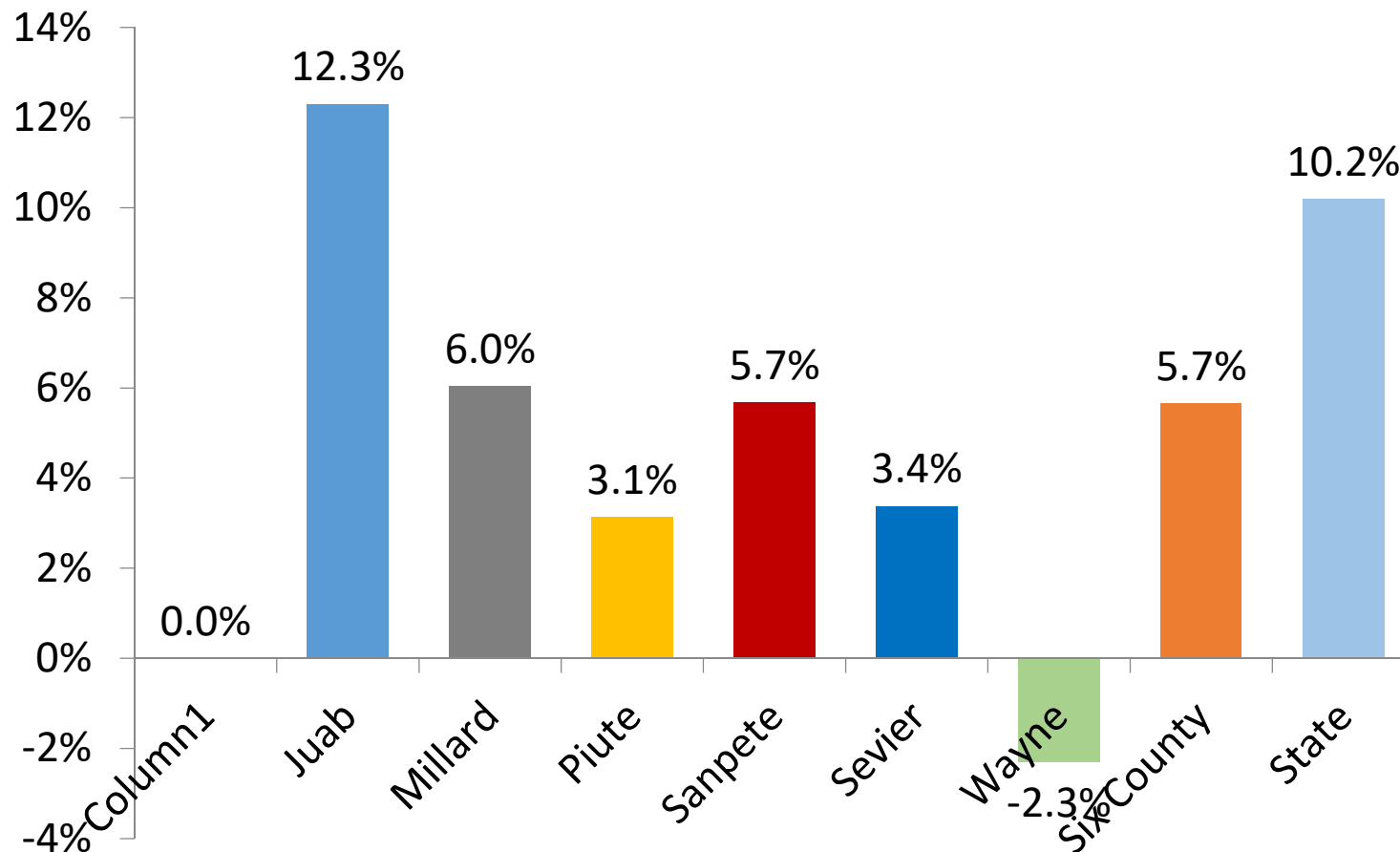
Source: Kem C. Gardner Policy Institute 2015-2065 State Projections

# Utah Population Pyramid: 2015 & 2065



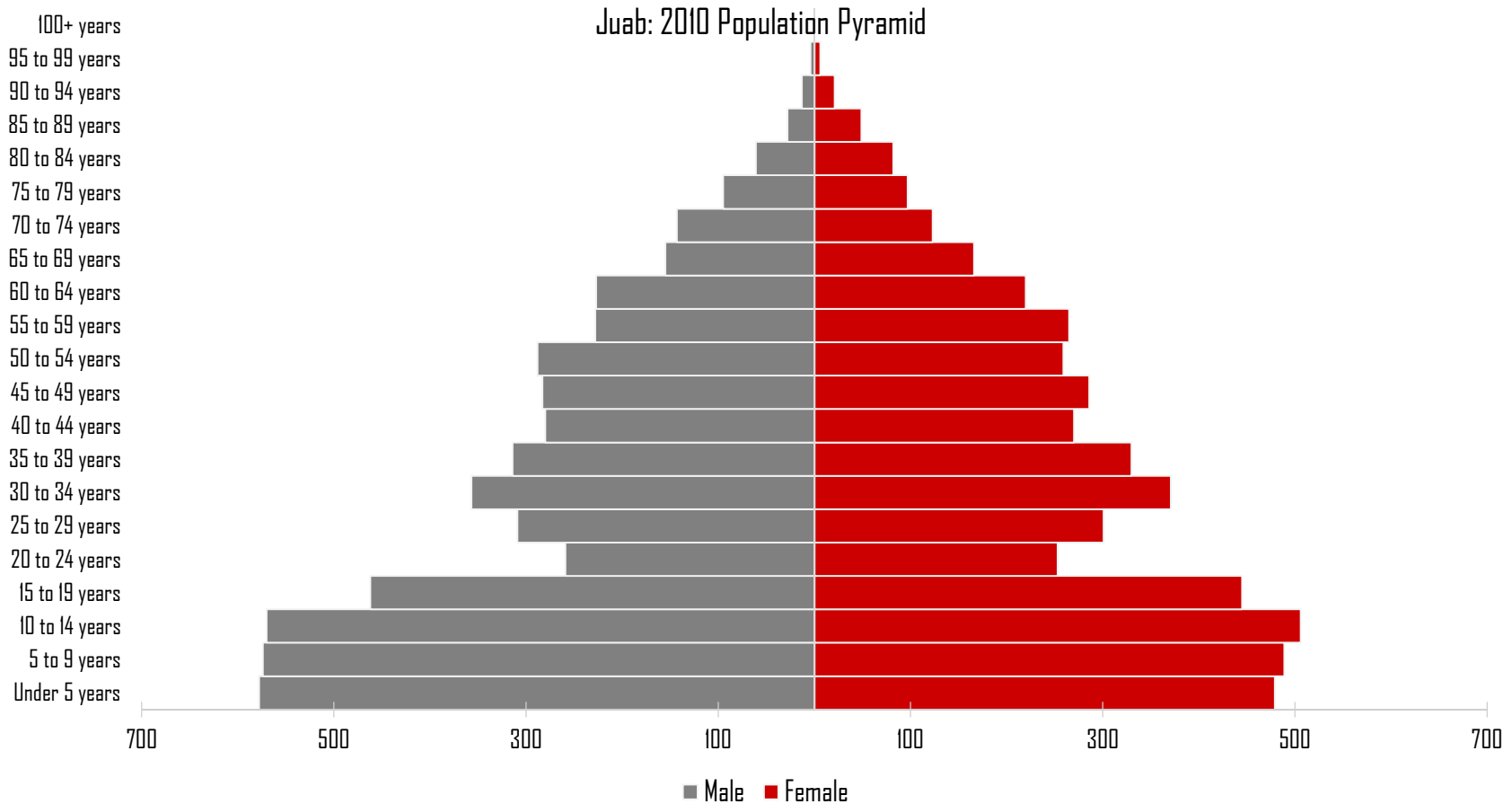
# Six County Population Growth Rates

2010-2016



# Juab County

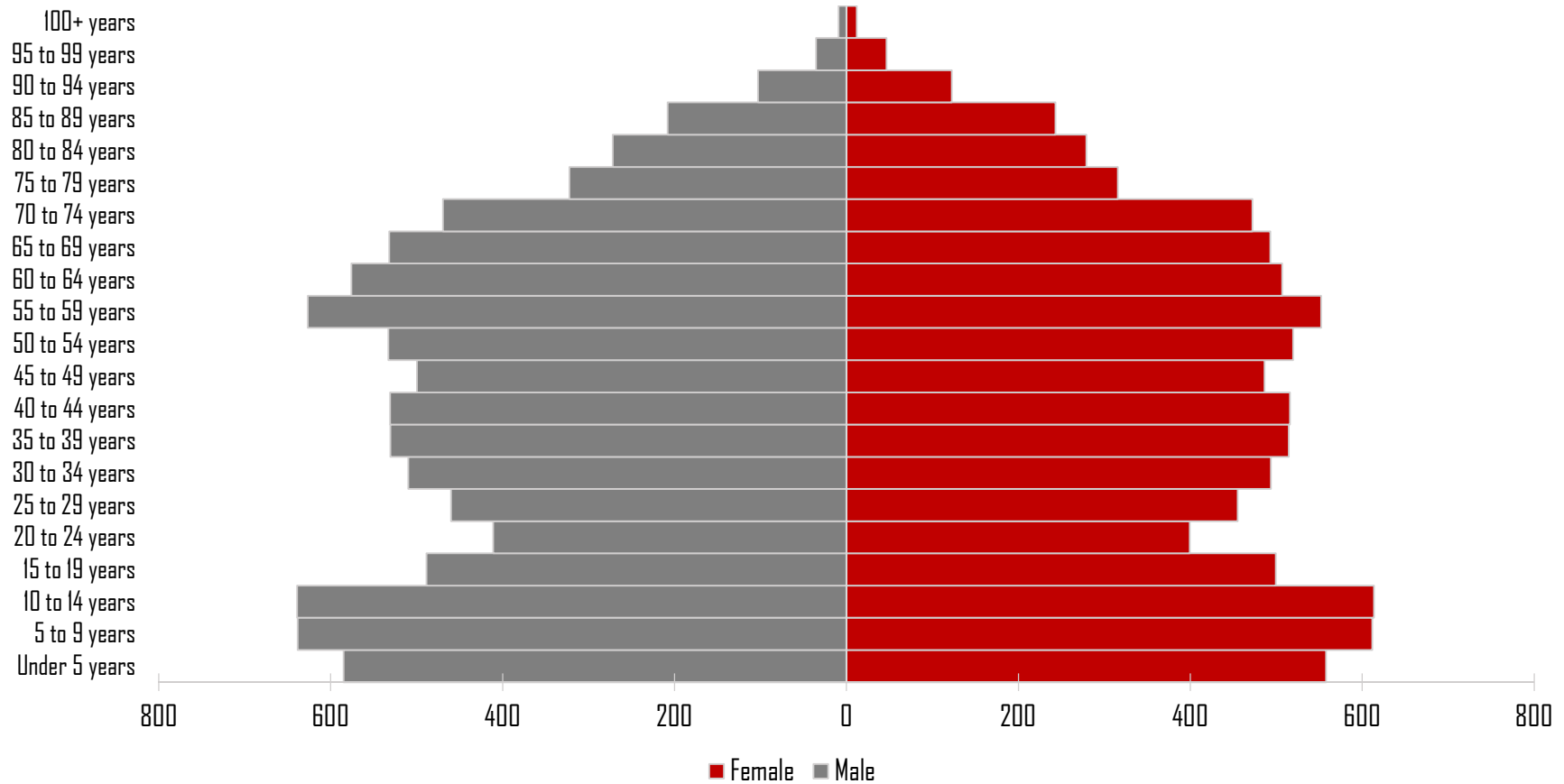
## Population Pyramid: 2010



# Juab County

## Population Pyramid: 2065

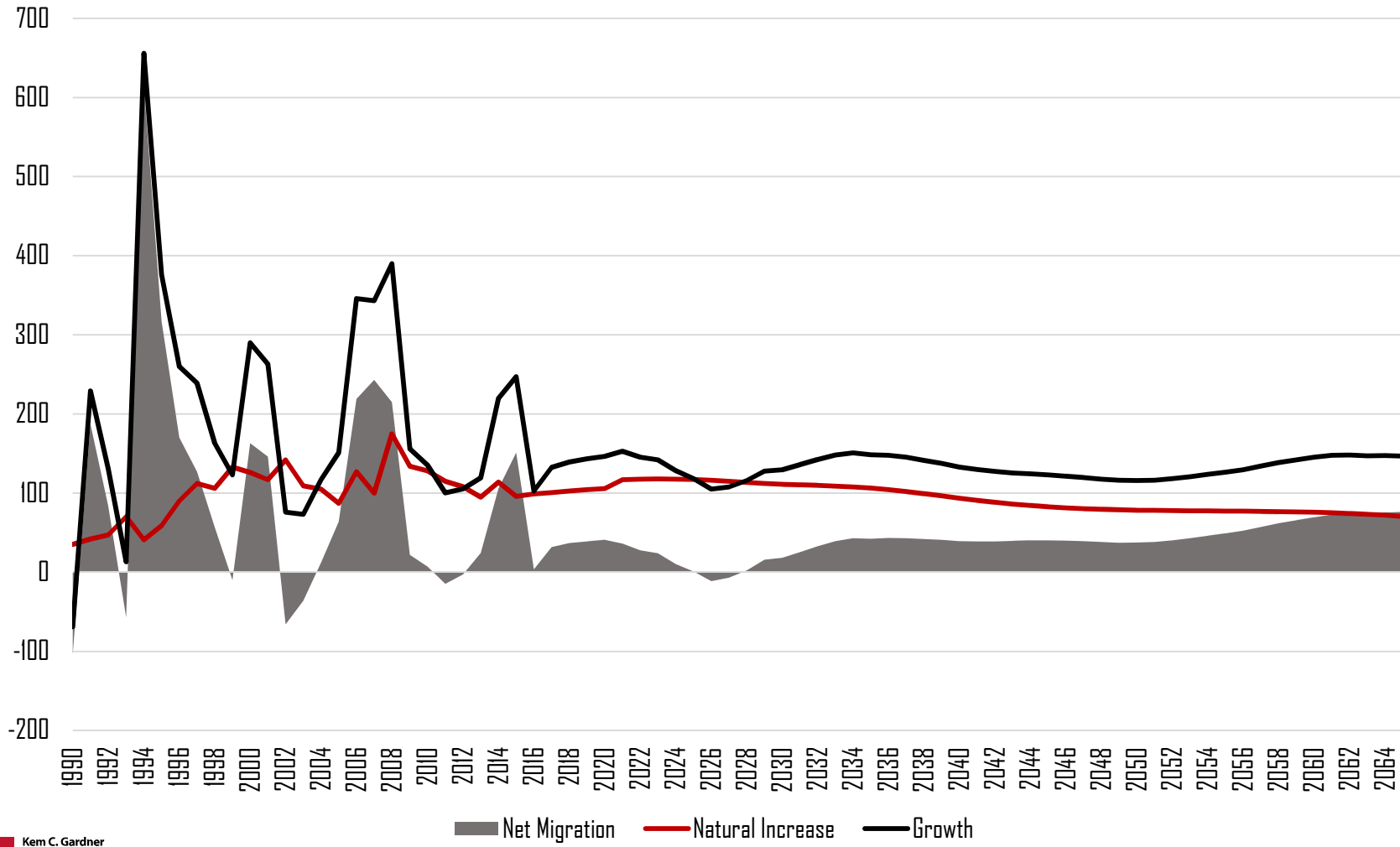
Juab: 2065 Population Pyramid





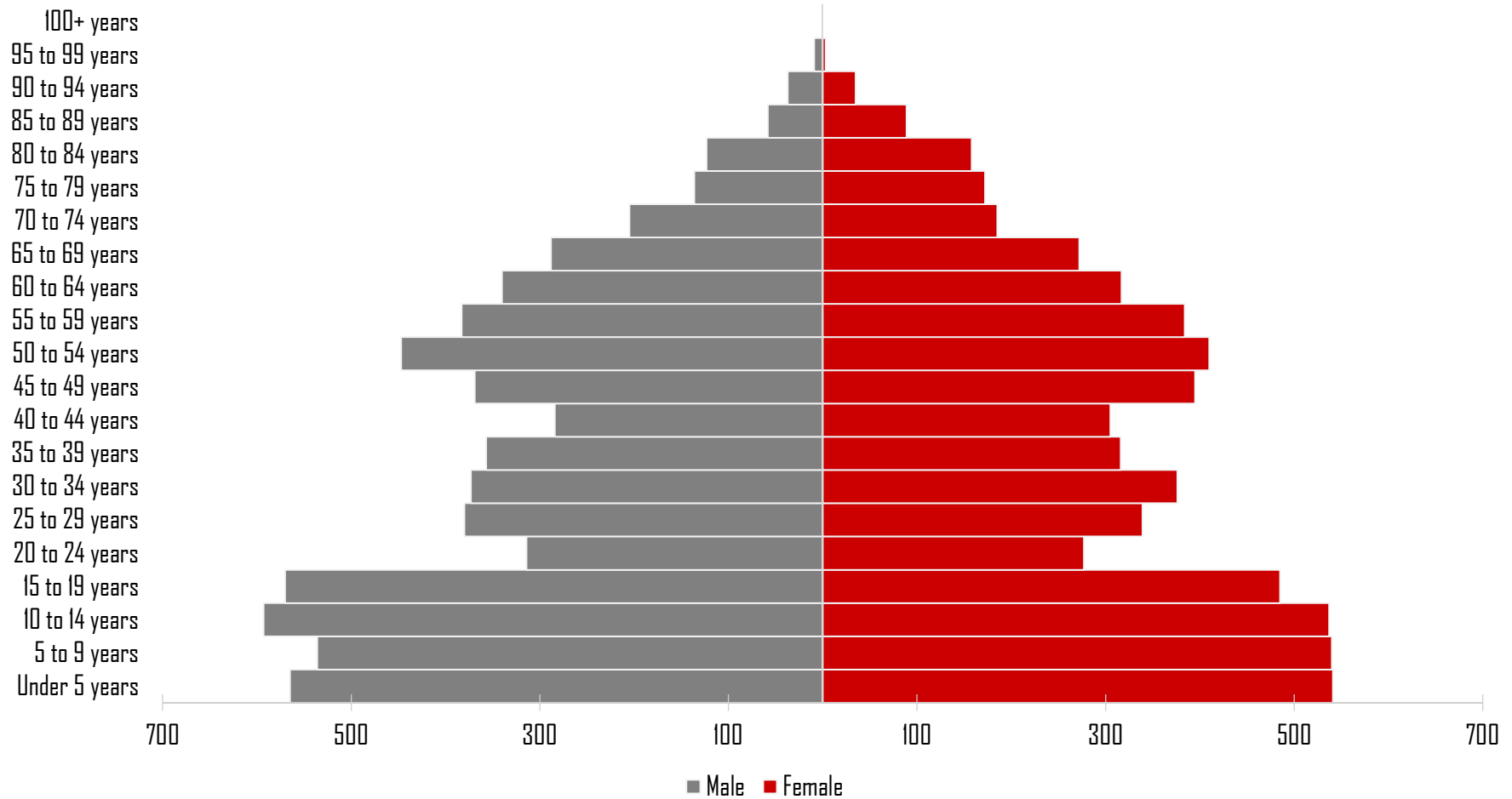
# Juab County

## *Components of Population Change*



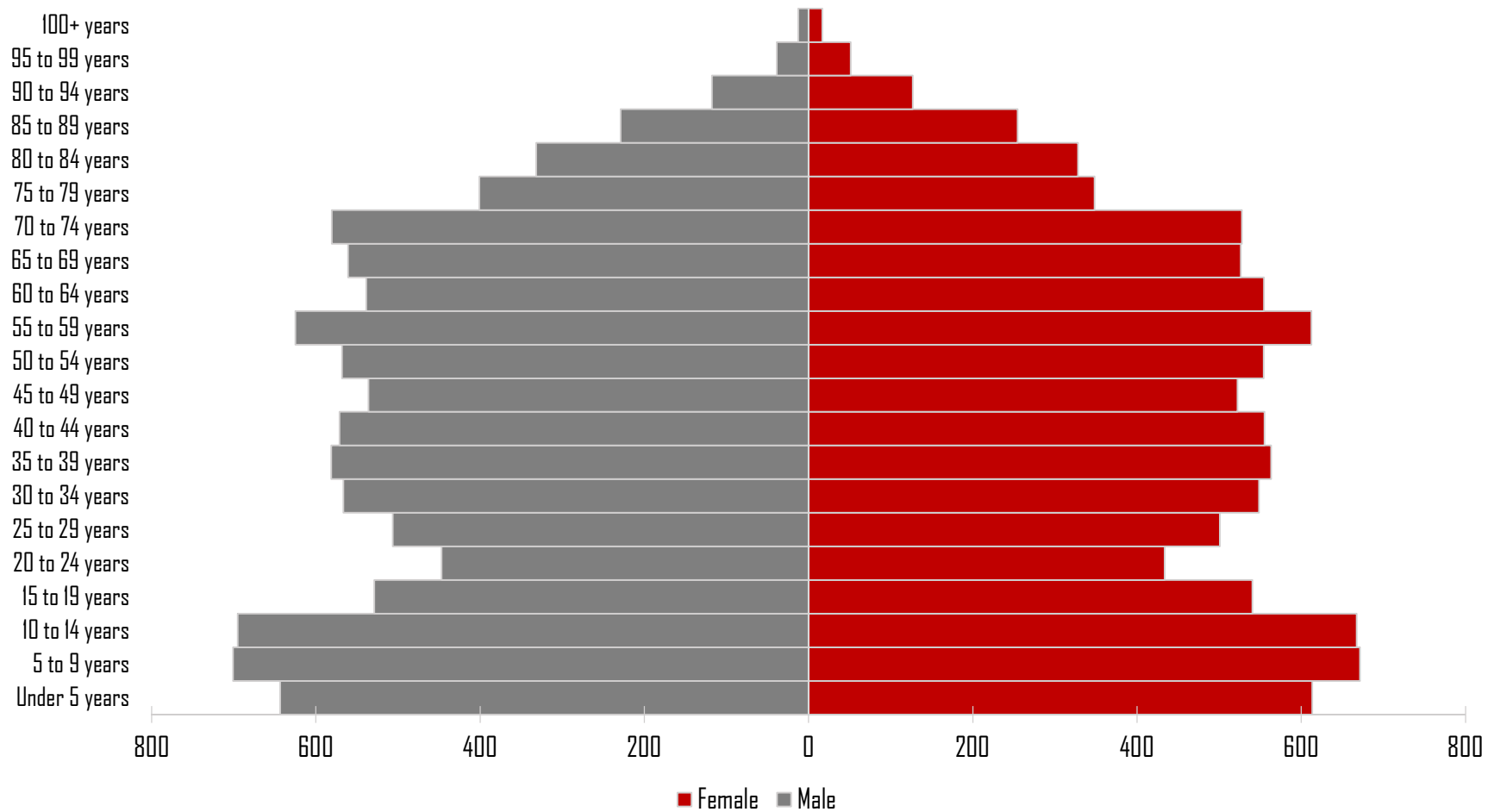
# Millard County

## Population Pyramid: 2010



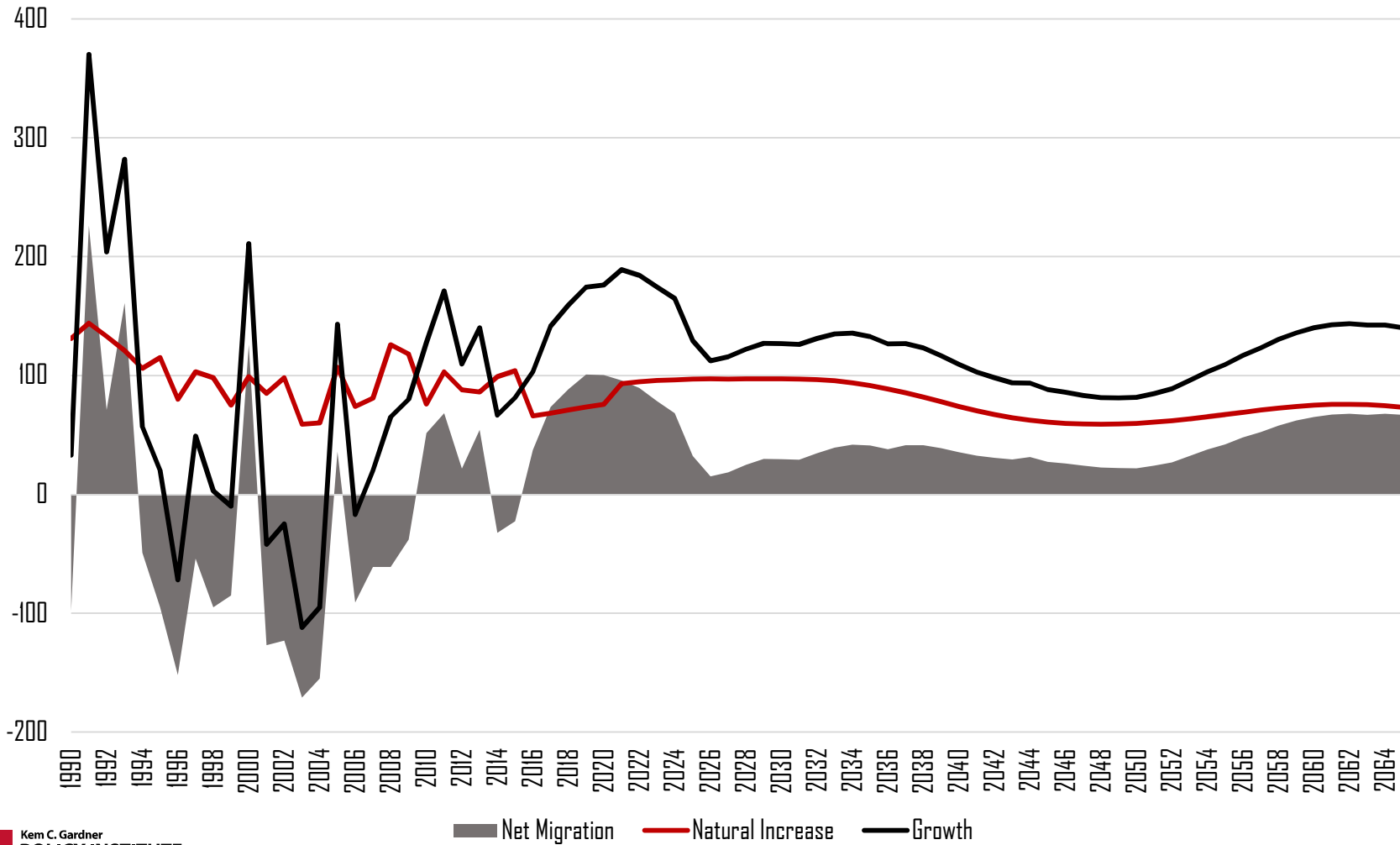
# Millard County

## Population Pyramid: 2065



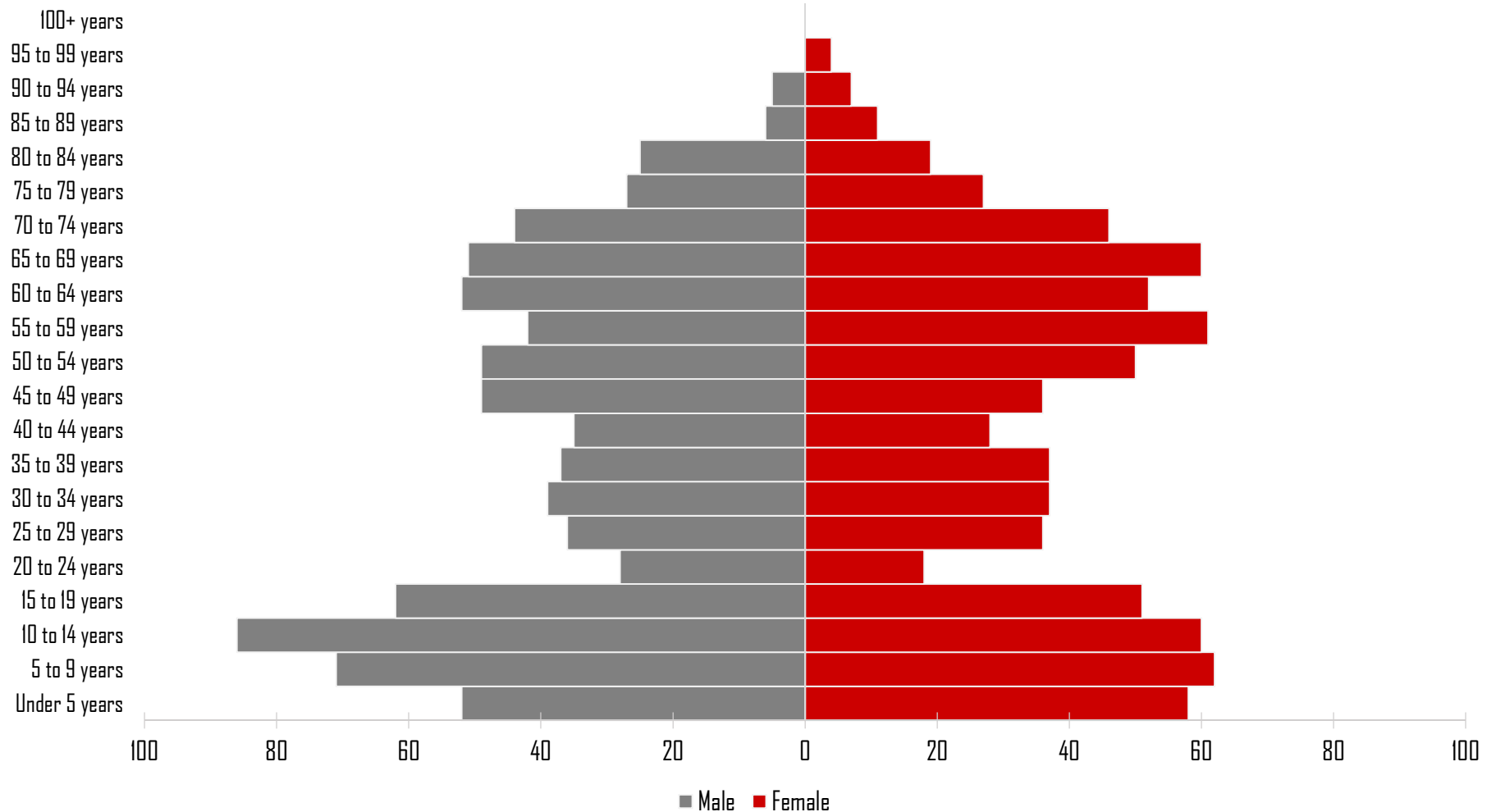
# Millard County

## *Components of Population Change*



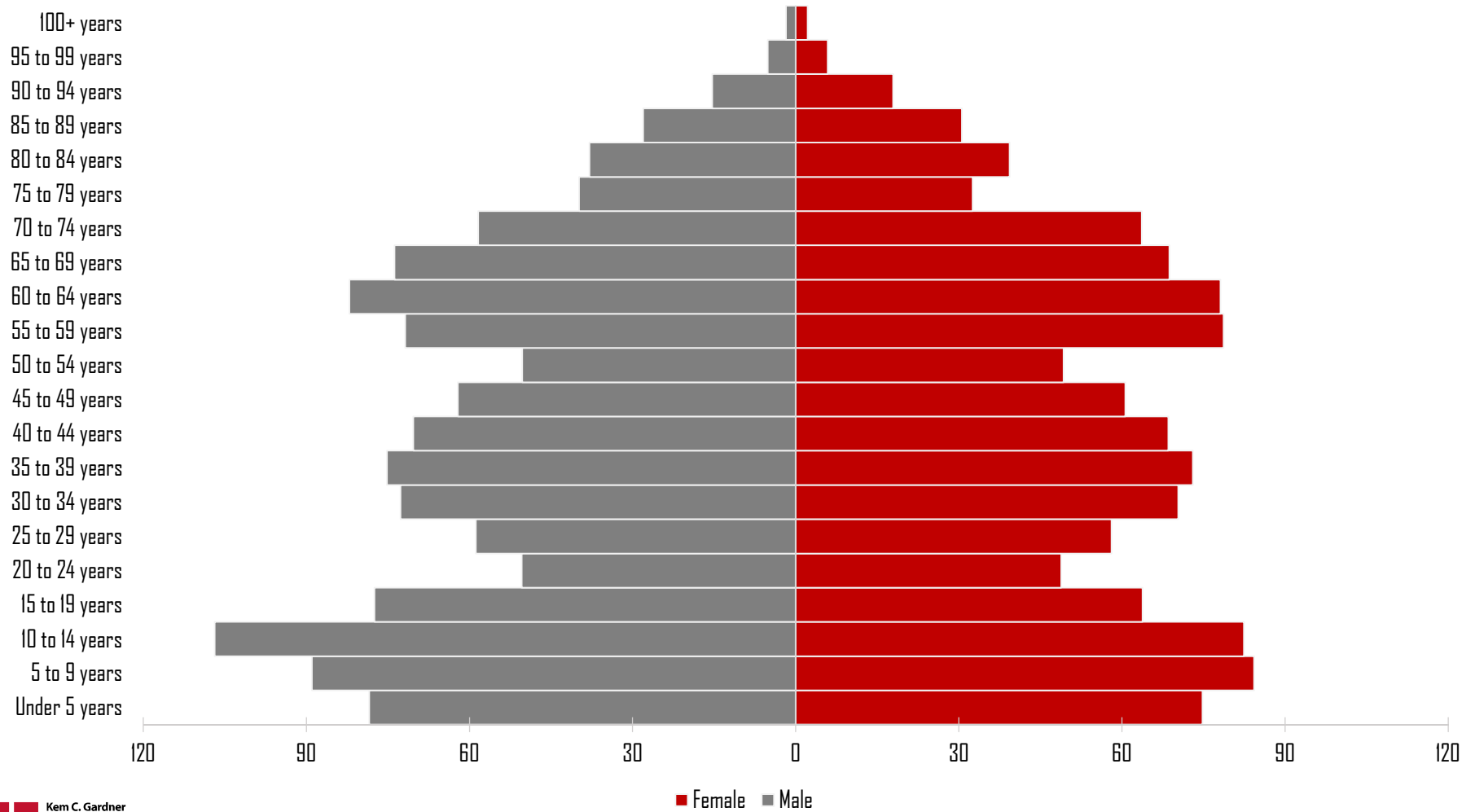
# Piute County

## Population Pyramid: 2010



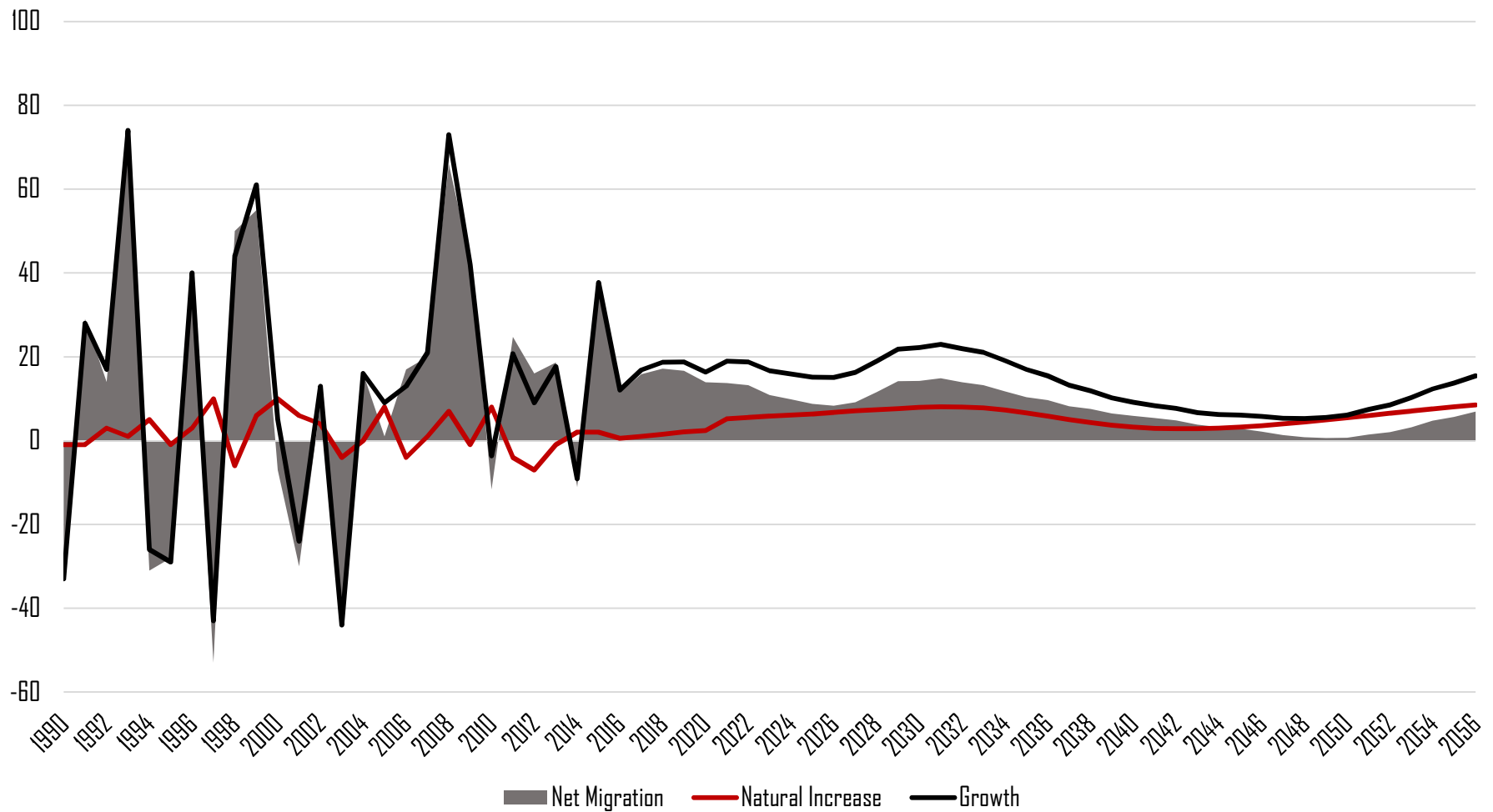
# Piute County

## Population Pyramid: 2065



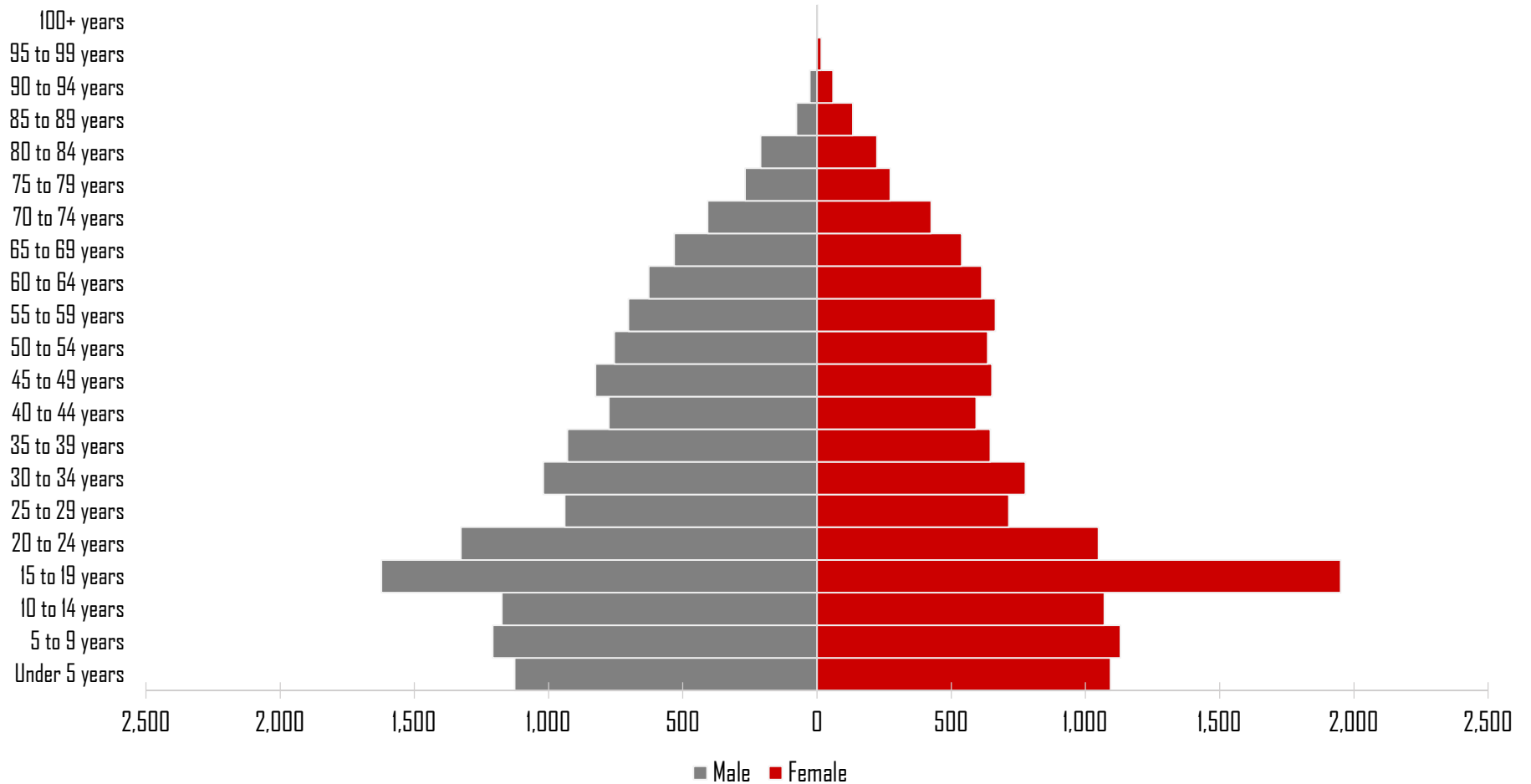
# Piute County

## Components of Population Change



# Sanpete County

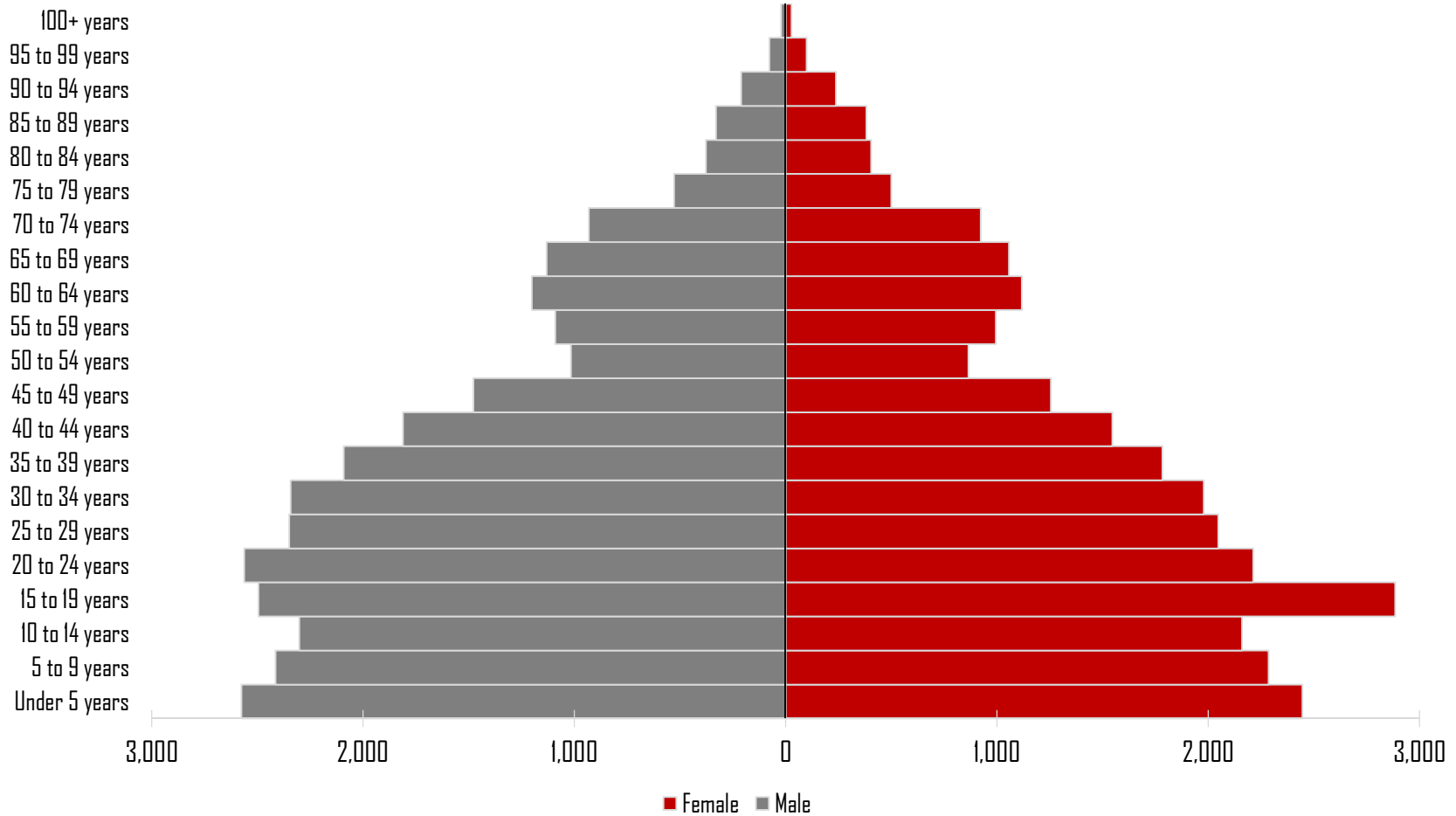
## Population Pyramid: 2010





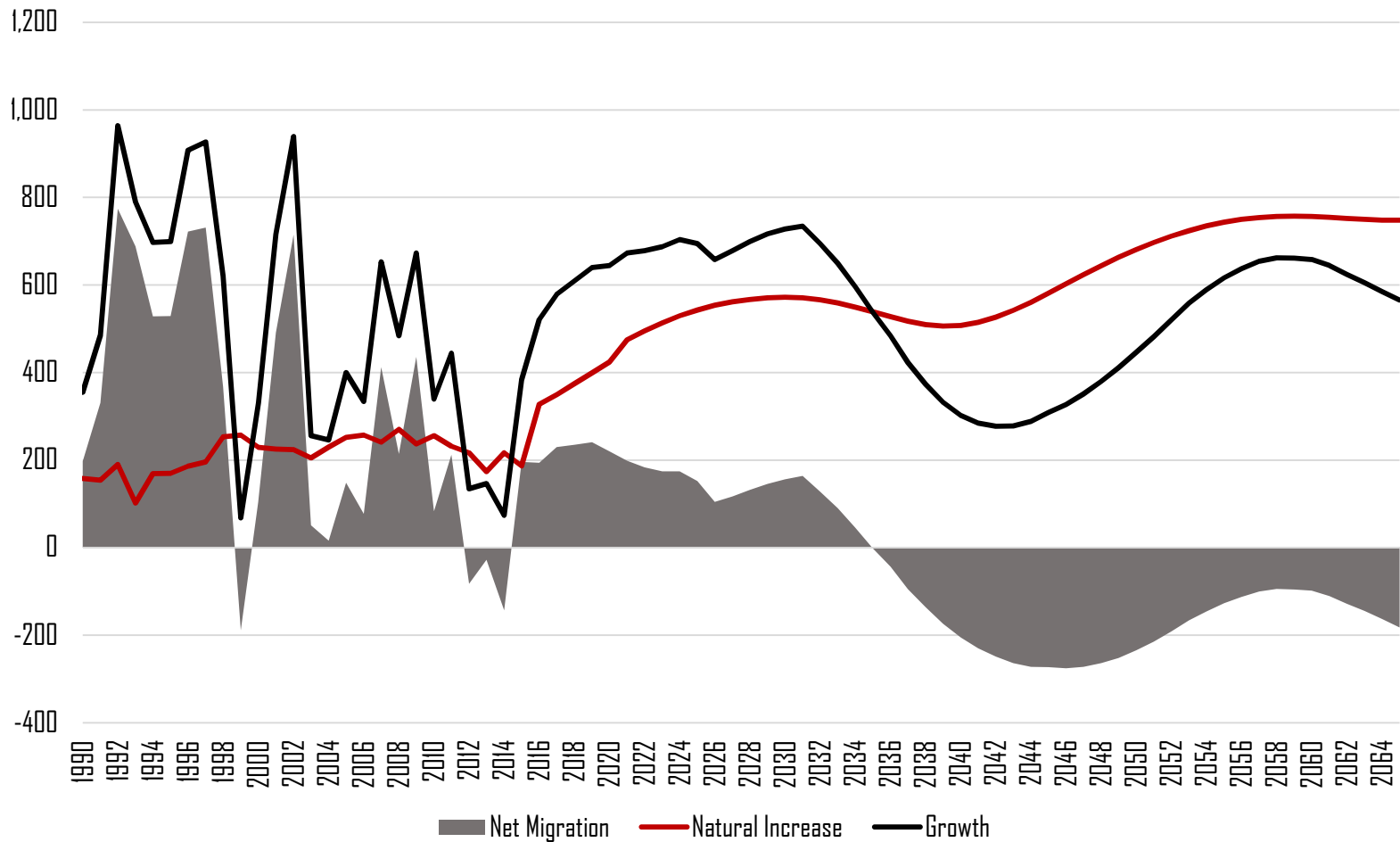
# Sanpete County

## Population Pyramid: 2065



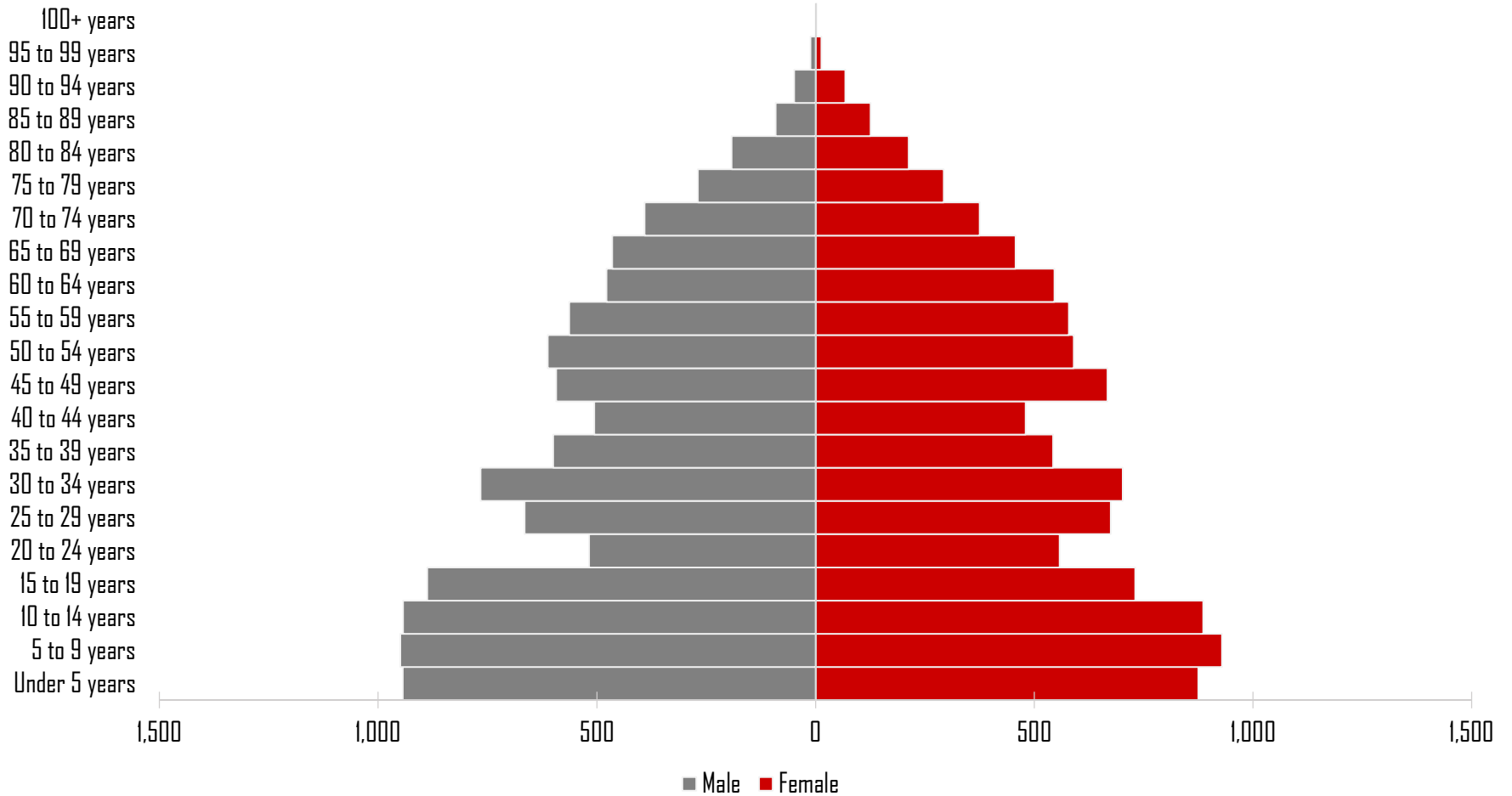
# Sanpete County

## *Components of Population Change*



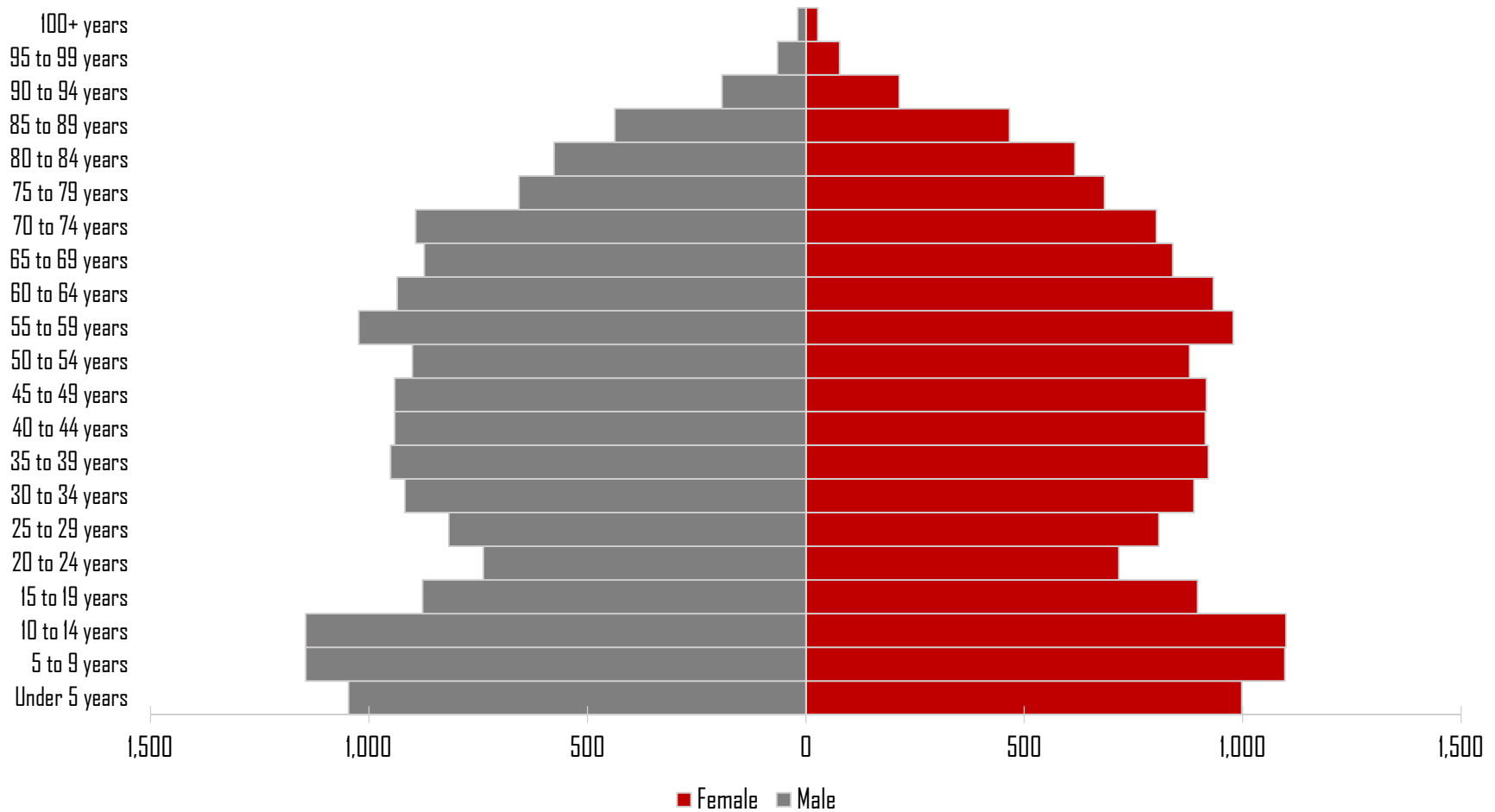
# Sevier County

## Population Pyramid: 2010



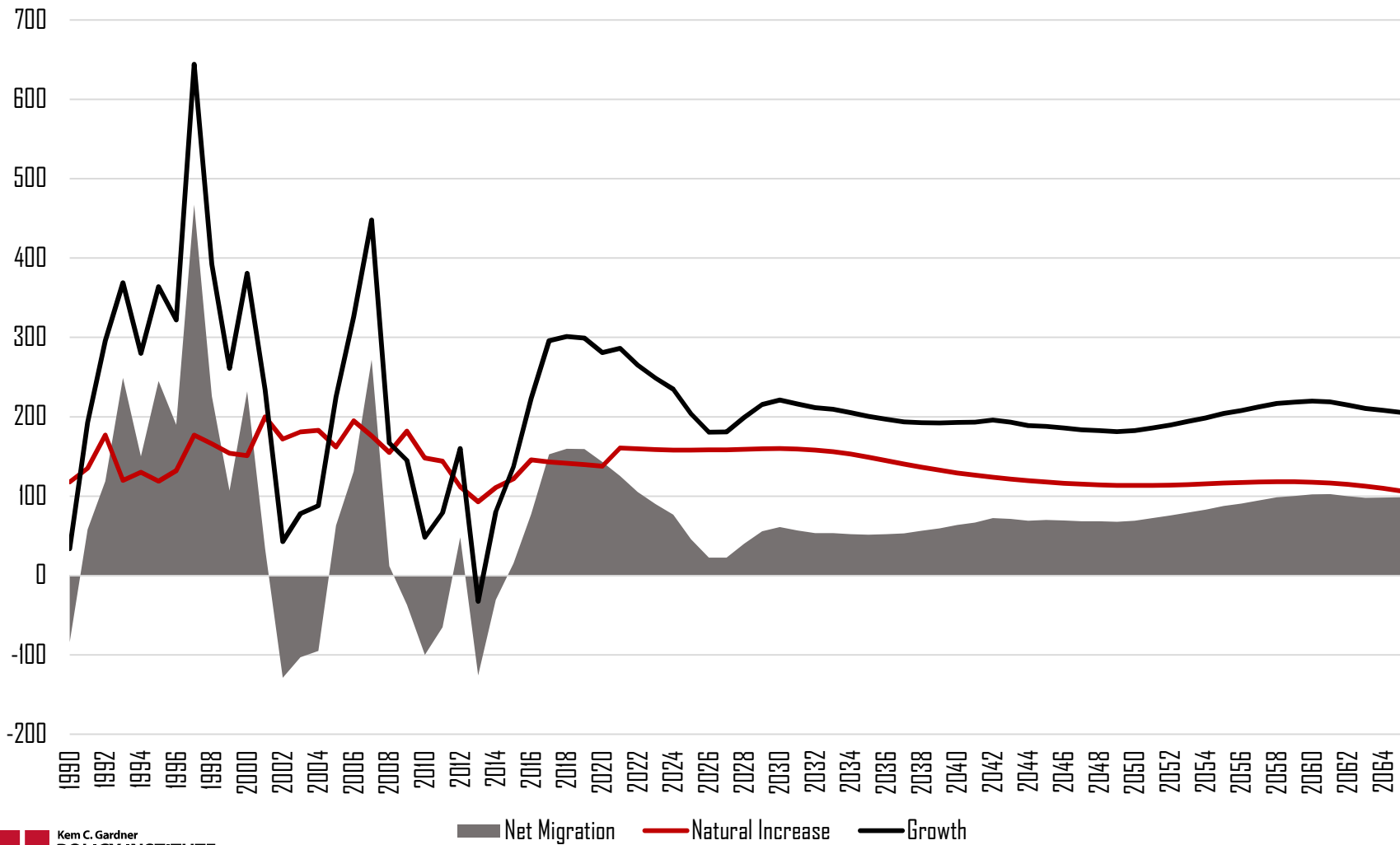
# Sevier County

## Population Pyramid: 2065



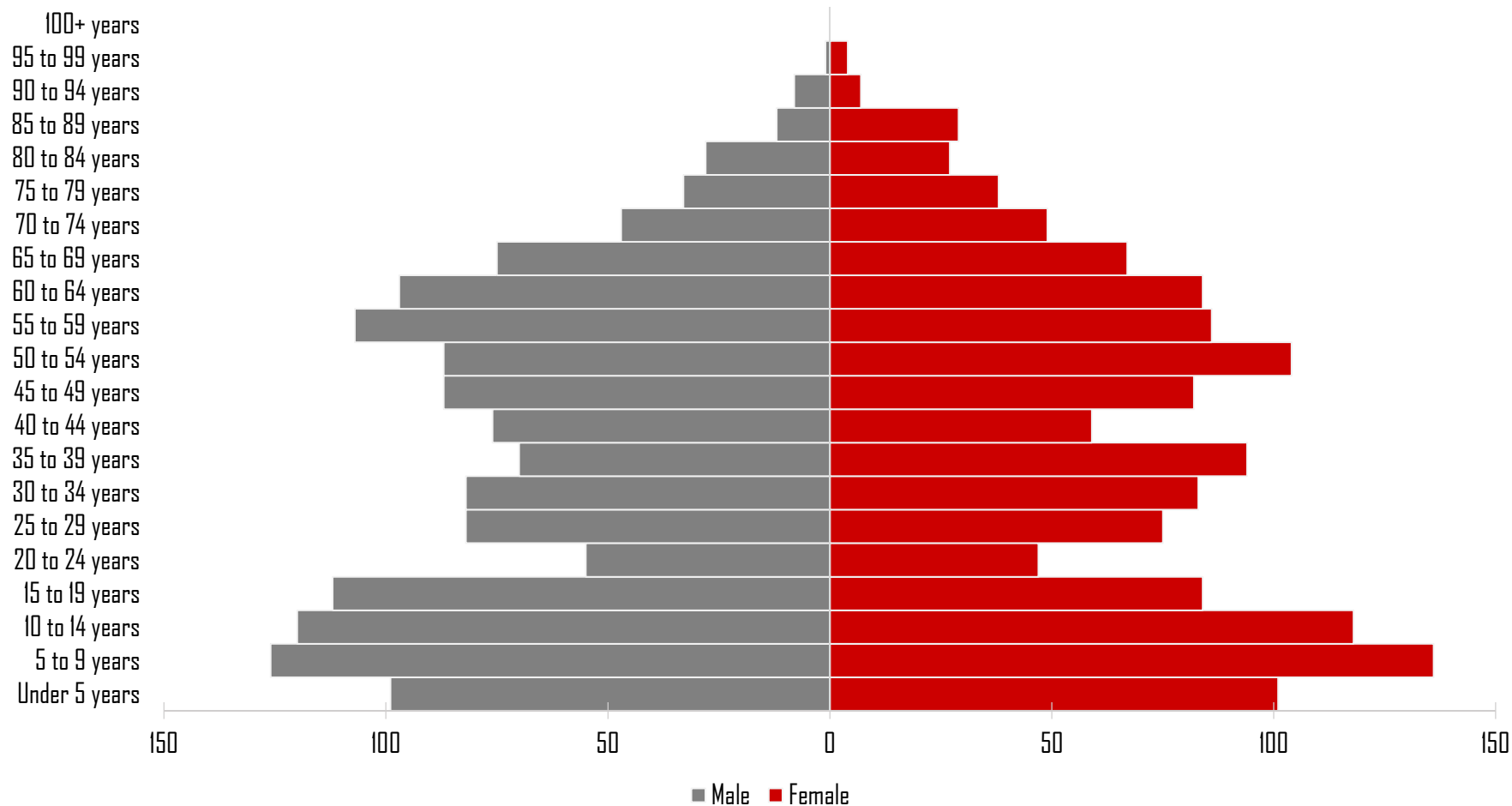
# Sevier County

## *Components of Population Change*



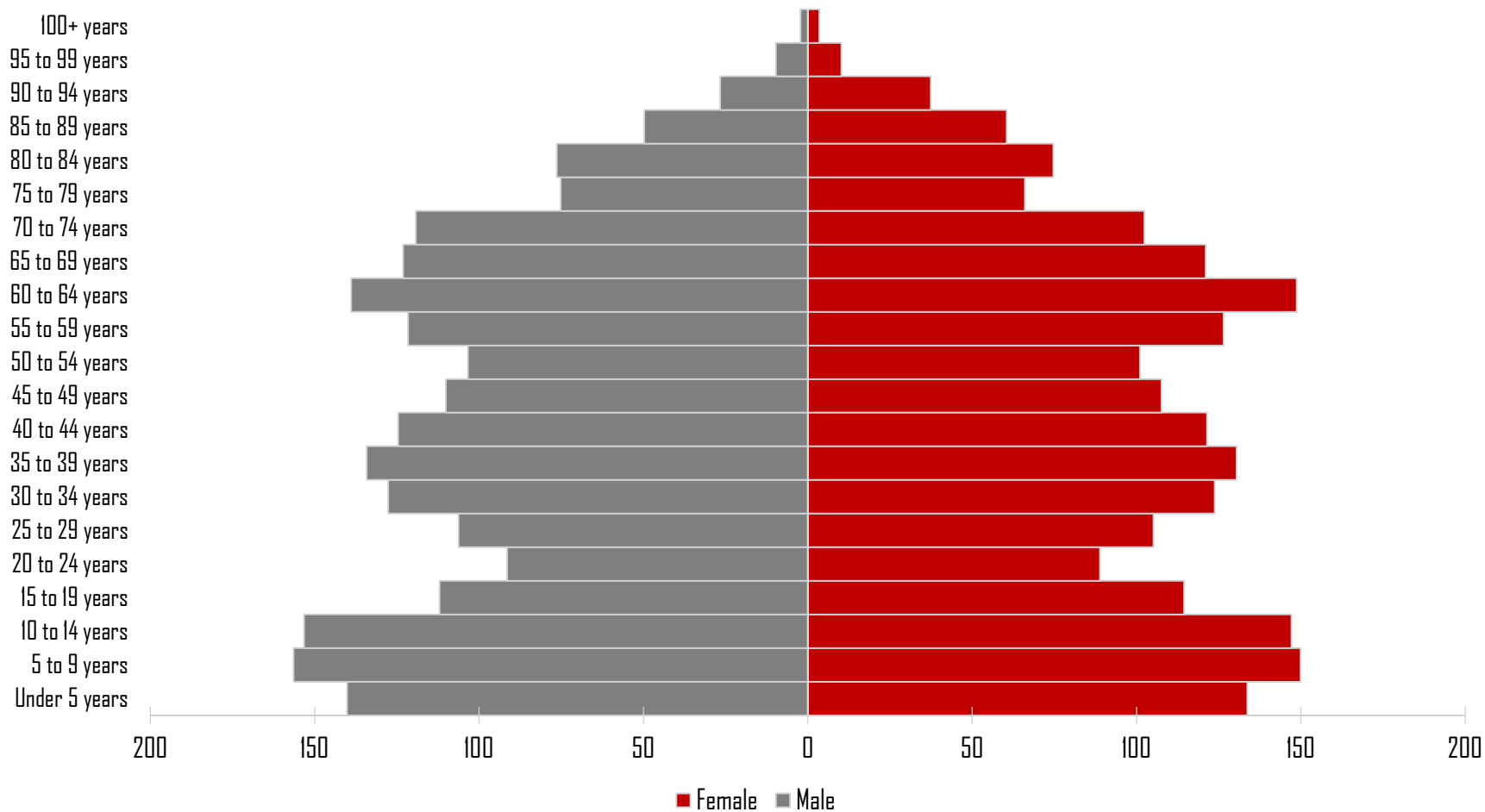
# Wayne County

## Population Pyramid: 2010



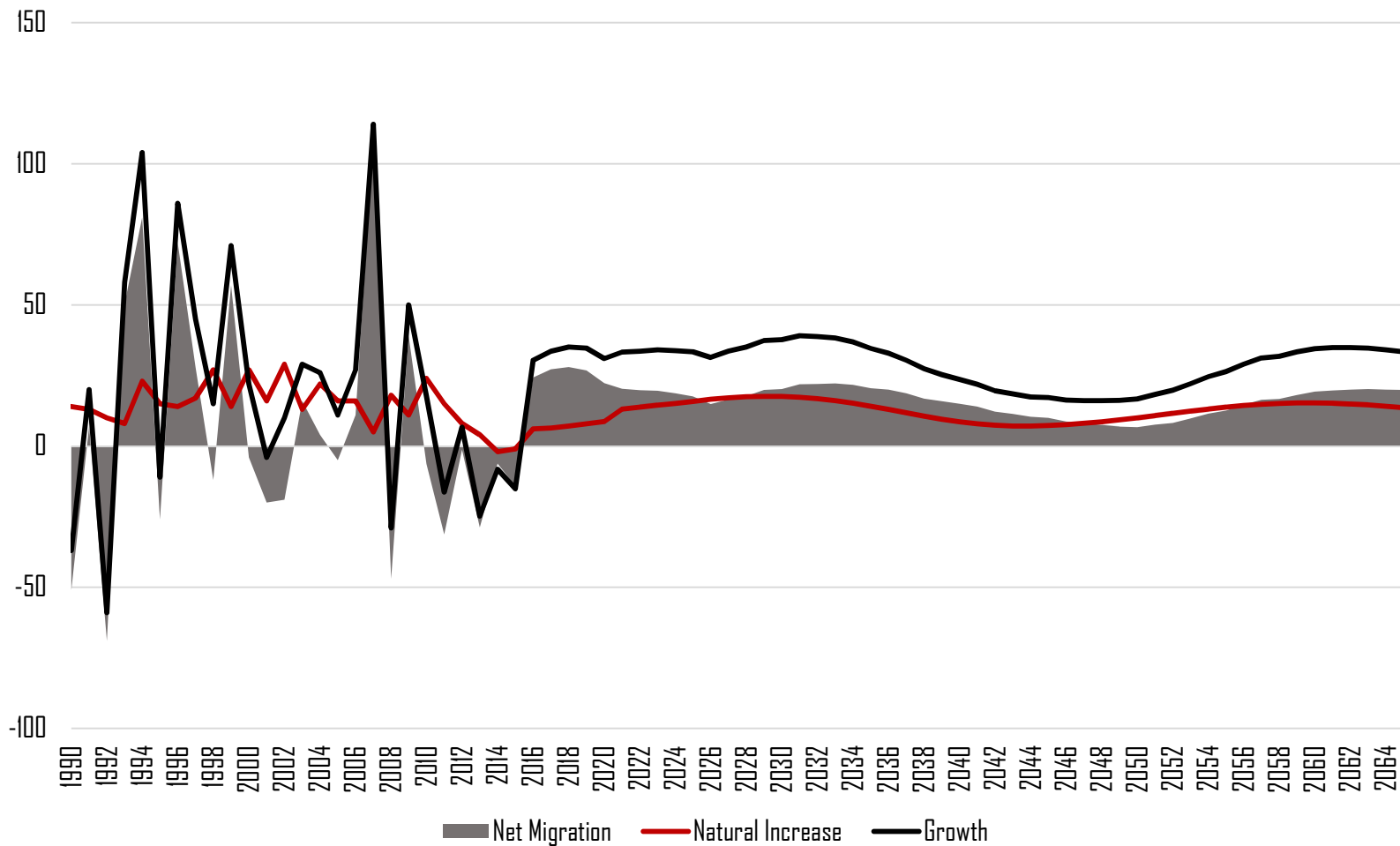
# Wayne County

## Population Pyramid: 2065



# Wayne County

## *Components of Population Change*





# Projected Six County Population Growth Rates

2015-2065 AARC

